

FR

ENG

DE

ES

IT

NL

PT

# SKIMMER A500 NHL

FR p.2

ENG p.12

DE p.22

ES p.32

IT p.42

NL p.52

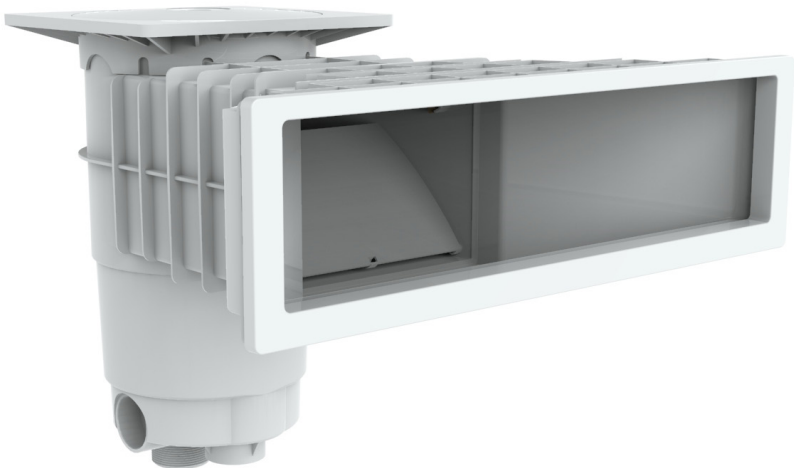
PT p.62

## GUIDE D'INSTALLATION

INSTALLATION MANUAL • INSTALLATIONSANLEITUNG

GUÍA DE INSTALACIÓN • GUIDA ALL'INSTALLAZIONE

INSTALLATIEHANDLEIDING • MANUAL DE INSTALAÇÃO



NOTA500

weltico

# 1. CARACTÉRISTIQUES

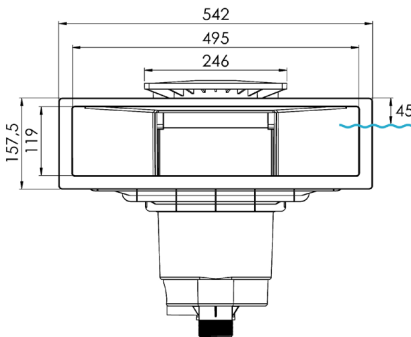
- Fabriqué en ABS
- Traité contre les UV
- Obturateur de réglage
- Volet flottant silencieux
- Tropic plein Ø50mm extérieur
- Sorties : - Ø50mm intérieur (x2)  
- 1"1/2 intérieur ou 2" extérieur

## RÉCEPTION DU MATÉRIEL

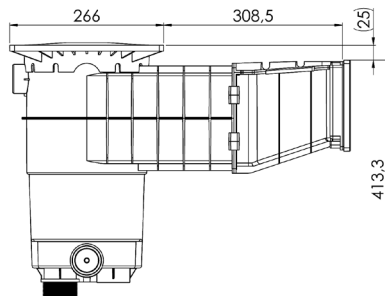
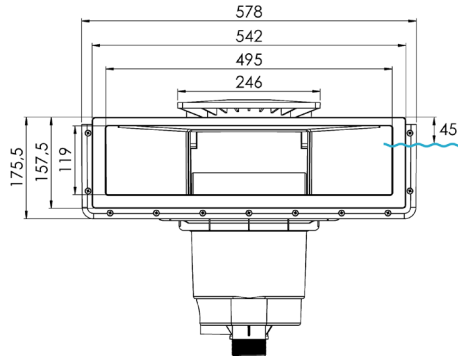
- 1 colis contenant la meurtrière complète + accessoires
- 1 colis contenant le boîtier complet + accessoires

## DIMENSIONS

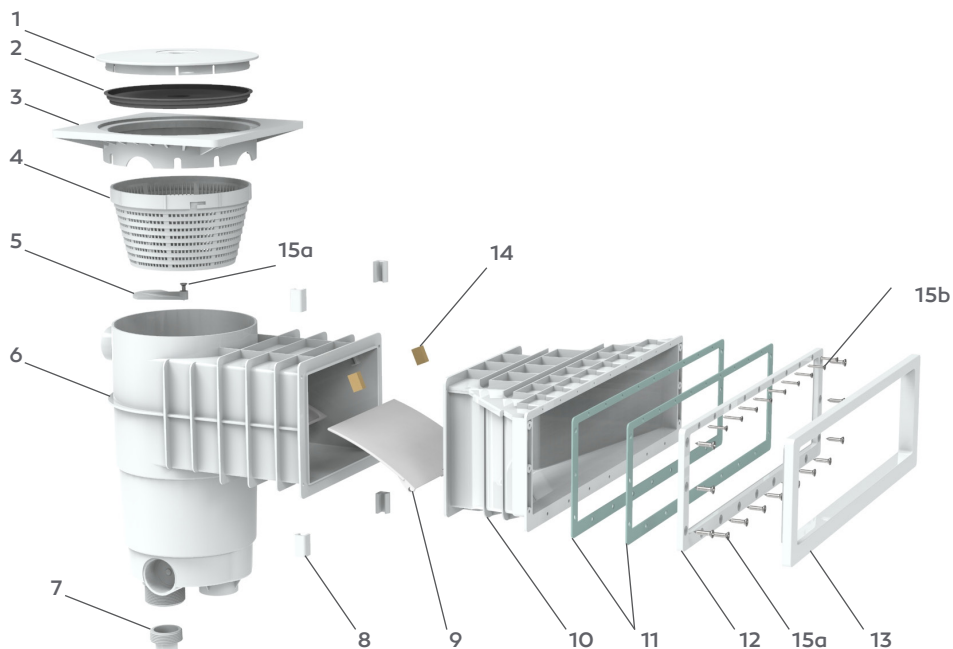
### - béton/béton liner



### - panneau-liner



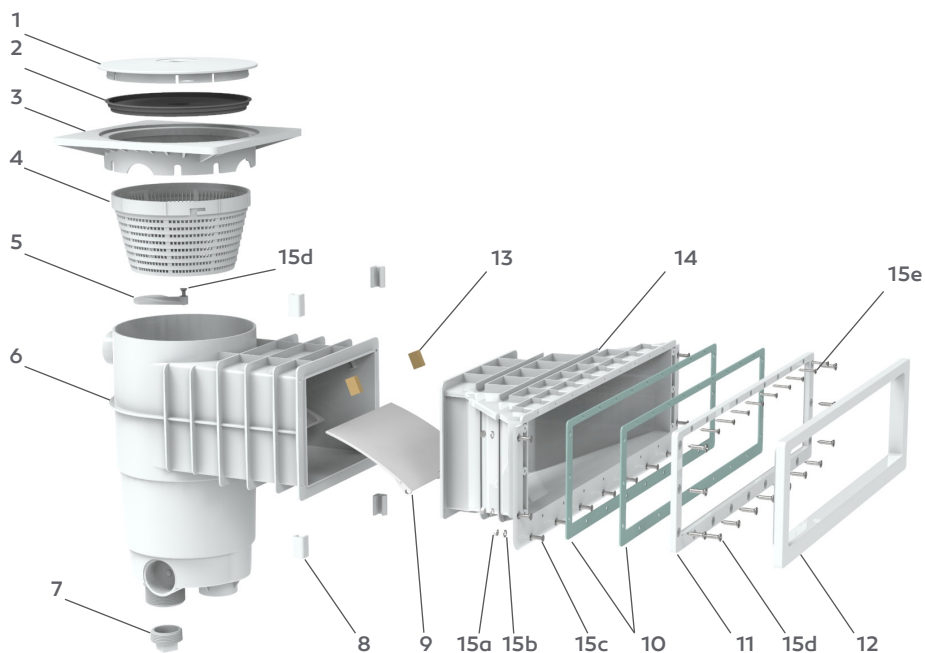
### VERSION BÉTON / BÉTON-LINER



| N°  | REF   | DÉSIGNATION                    | QUANTITÉ |
|-----|-------|--------------------------------|----------|
| 1   | 80176 | COUVERCLE NEUTRE               | 1        |
| 2   | 60360 | COUVERCLE PERDU                | 1        |
| 4   | 62513 | TÉLESCOPE SKIMMER/SKIMFILTRE   | 1        |
| 5   | 60284 | OBTURATEUR DE FOND SKIMMER     | 1        |
| 7   | 60392 | BOITIER MONOBLOC               | 1        |
| 8   | 64130 | PINCES MEURTRIÈRE              | 4        |
| 9   | 62341 | BARRIÈRE POUR SKIMMER          | 1        |
| 10  | 80470 | MEURTRIÈRE A500 DESIGN - BÉTON | 1        |
| 11  | 80493 | JOINT A500                     | 2        |
| 12  | 80491 | CONTRE BRIDE A500              | 1        |
| 13  | 80492 | CACHE VIS A500                 | 1        |
| 14  | 62461 | ARRÊT BARRIÈRE                 | 2        |
| 15a | 60469 | VIS TF 5.5X25                  | 13       |
| 15b | 62423 | VIS TF 3.9X25                  | 9        |

## 2. COMPOSITION DES KITS

### VERSION PANNEAU-LINER



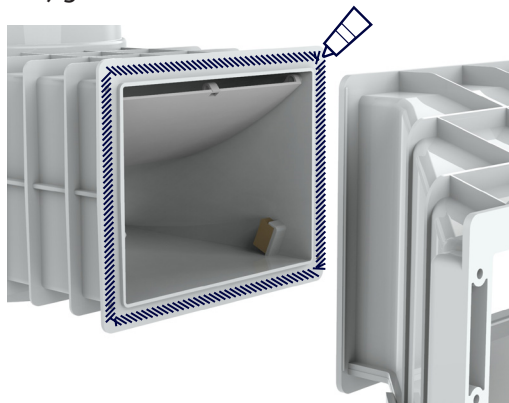
| N°  | REF   | DÉSIGNATION                      | QUANTITÉ |
|-----|-------|----------------------------------|----------|
| 1   | 80176 | COUVERCLE NEUTRE                 | 1        |
| 2   | 60360 | COUVERCLE PERDU                  | 1        |
| 4   | 62513 | TÉLESCOPE SKIMMER/SKIMFILTRE     | 1        |
| 5   | 60284 | OBTURATEUR DE FOND SKIMMER       | 1        |
| 7   | 60392 | BOITIER MONOBLOC                 | 1        |
| 8   | 64130 | PINCES MEURTRIÈRE                | 4        |
| 9   | 62341 | BARRIÈRE POUR SKIMMER            | 1        |
| 10  | 80493 | JOINT A500                       | 2        |
| 11  | 80491 | CONTRE BRIDE A500                | 1        |
| 12  | 80492 | CACHE VIS A500                   | 1        |
| 13  | 62461 | ARRÊT BARRIÈRE                   | 2        |
| 14  | 80490 | MEURTRIÈRE A500 DESIGN - PANNEAU | 1        |
| 15a | 62419 | RONDELLE INOX M5                 | 11       |
| 15b | 62420 | ECROU INOX M5                    | 11       |
| 15c | 62418 | VIS TF M5X20                     | 11       |
| 15d | 60469 | VIS TF 5.5X25                    | 13       |
| 15e | 62423 | VIS TF 3.9X25                    | 9        |

### 3. ASSEMBLAGE

FR

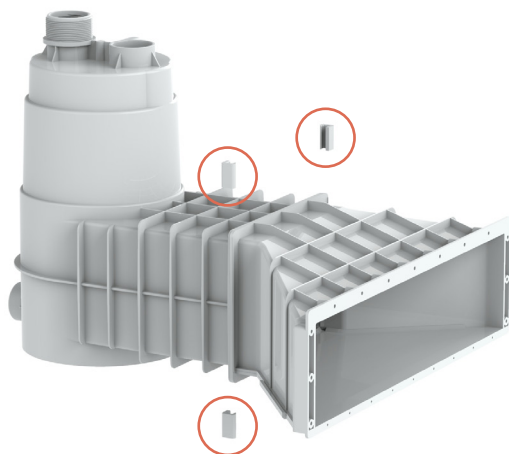
*Les deux parties du Skimmer peuvent être assemblées avant ou après la mise en place sur la paroi.*

Appliquer un cordon de colle continu sur la surface indiquée (sur les deux parties du Skimmer) grâce au tube de colle fournie.



**ATTENTION :** Une fois les deux parties collées, il est pratiquement impossible de les séparer au bout d'une 1/2 heure.

Pour faciliter le maintien des parties du Skimmer, glisser les quatre pinces à la jonction du Skimmer. S'assurer du contact sur tout le contour de la jonction.

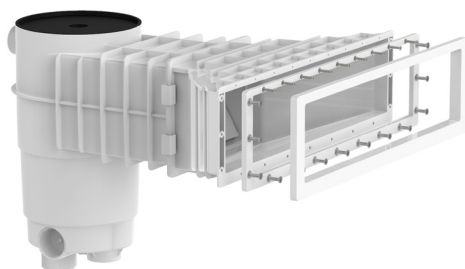


## 4. MISE EN PLACE

### VERSION BETON

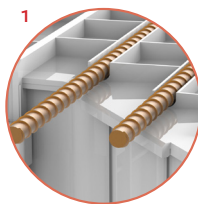
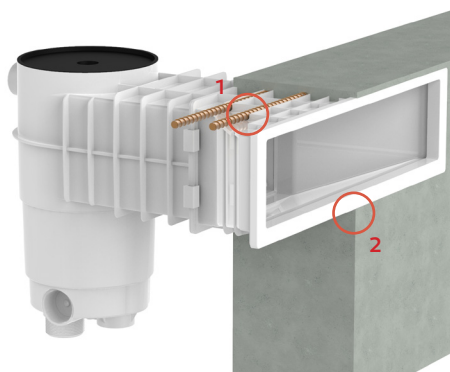
1

Assembler la bride et le cache-vis sur la meurtrière du Skimmer.



2

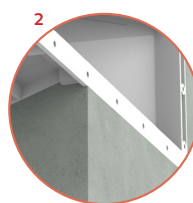
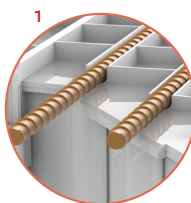
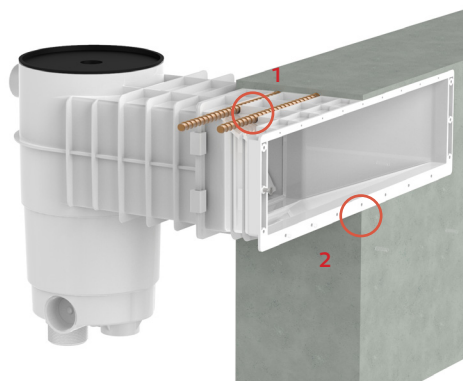
- Placer puis caler le dessous du boîtier pour stabiliser le Skimmer à l'horizontale.
- Mettre en place le ferrailage autour du Skimmer (à noter que les nervures supérieures de la meurtrière A500 peuvent accueillir des fers à béton de Ø12mm max.<sup>1</sup>).
- Re-contrôler le niveau du boîtier puis couler le béton à l'arase du cache-vis<sup>2</sup> (nous préconisons 30mm de béton minimum au dessus du boîtier).



## VERSION BETON-LINER

1

- Placer puis caler le dessous du boîtier pour stabiliser le Skimmer à l'horizontale.
- Mettre en place le ferrailage autour du Skimmer (à noter que les nervures supérieures de la meurtrière A500 peuvent accueillir des fers à béton de Ø12mm max.<sup>1</sup>).
- Re-contrôler le niveau du boîtier puis couler le béton à l'arase de la meurtrière<sup>2</sup> (nous préconisons 30mm de béton minimum au dessus du boîtier).



2

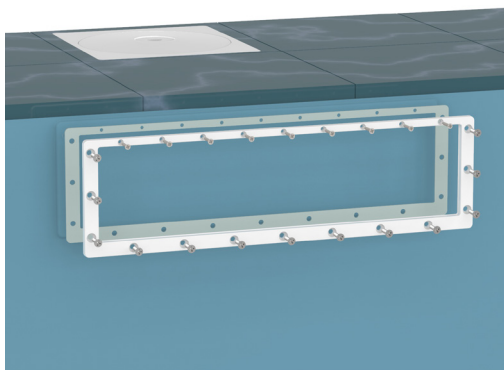
Poser le premier joint plat côté adhésif sur la surface de la meurtrière. Procéder ensuite à la pose du liner (si présent).



**3**

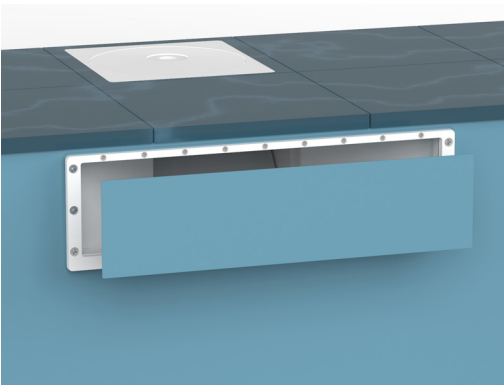
Placer le second joint côté plat adhésif sur la bride. Positionner ensuite la bride sur le liner en alignant les axes des trous avec la meurtrières puis visser l'ensemble des vis.

Il est préférable de finir le serrage de ces dernières avec un tournevis plutôt qu'une visseuse pour éviter d'abîmer la pièce.



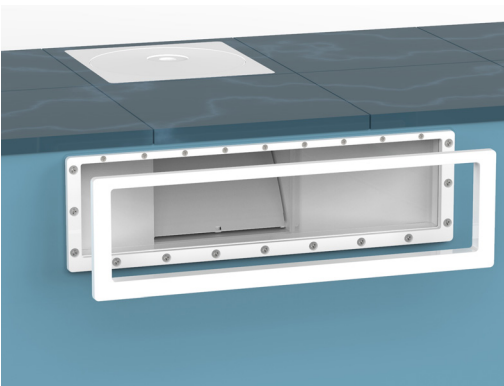
**4**

A l'aide d'un cutter, découper le liner de façon à découvrir l'ouverture du Skimmer. Enlever la chute de liner.



**5**

Clipser le cache-vis sur la bride.



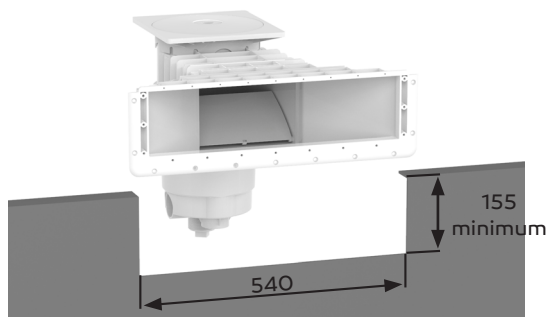


## VERSION PANNEAU-LINER

1

Réaliser une découpe dans la structure panneau qui accueillera le Skimmer.

155mm(minimum)x540mm



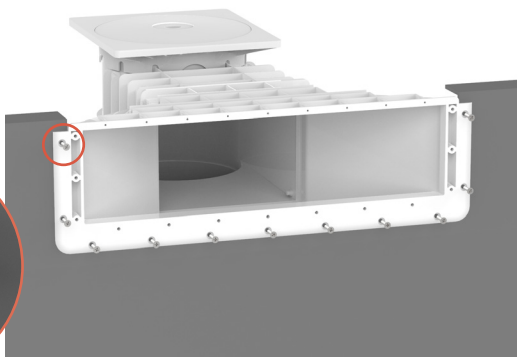
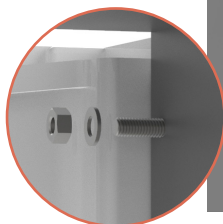
2

Positionner le Skimmer dans l'ouverture puis percer ( $\text{\O}5.5\text{mm}$ ) l'ensemble des trous pour les boulons. Penser à contrôler le niveau du boîtier.



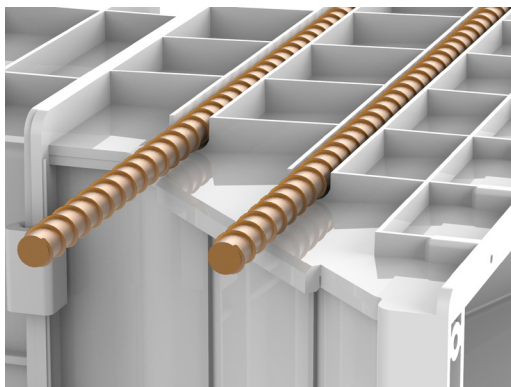
3

Visser les boulons pour maintenir la position du Skimmer sur la structure.



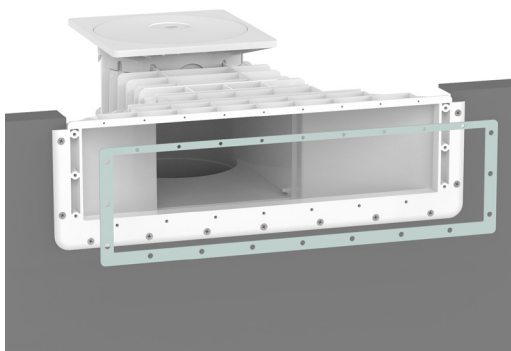
4

Mettre en place le ferrailage autour du Skimmer (à noter que les nervures supérieures de la meurtrière A500 peuvent accueillir des fers à béton de Ø12mm max.).



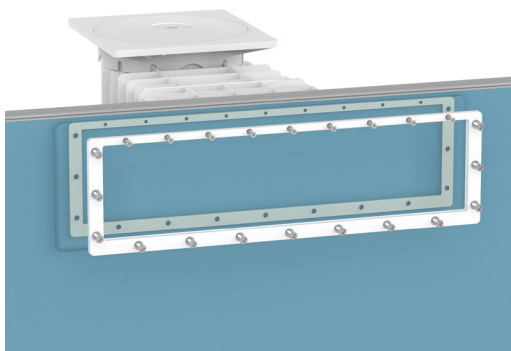
5

Poser le premier joint plat côté adhésif sur la surface de la meurtrière.



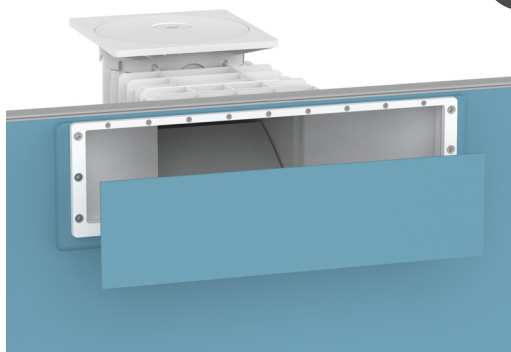
6

Procéder à la pose du liner. Placer le second joint côté plat adhésif sur la bride. Positionner ensuite la bride sur le liner en alignant les axes des trous avec la meurtrières puis visser l'ensemble des vis.



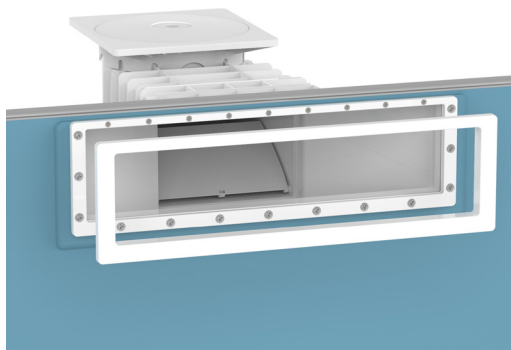
7

A l'aide d'un cutter, découper le liner de façon à découvrir l'ouverture du Skimmer. Enlever la chute de liner.



8

Clipser le cache-vis sur la bride.



# 1. CHARACTERISTICS

---

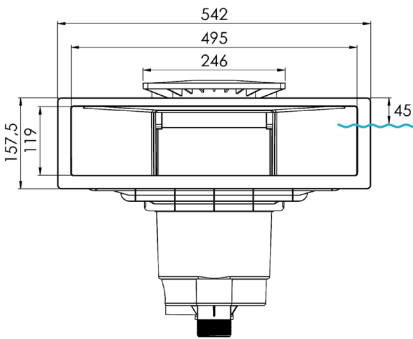
- Made of ABS
- UV treated
- Adjustment shutter
- Silent floating shutter
- Overflow  $\varnothing$  50 mm (OD)
- Outlets: -  $\varnothing$  50 mm (ID) x 2  
- 1½" internal thread or 2" external thread

## RECEIPT OF THE EQUIPMENT

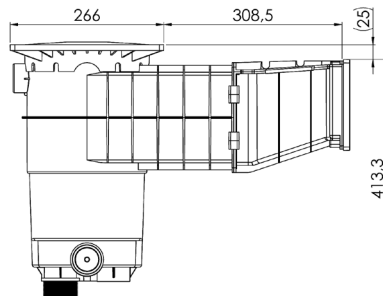
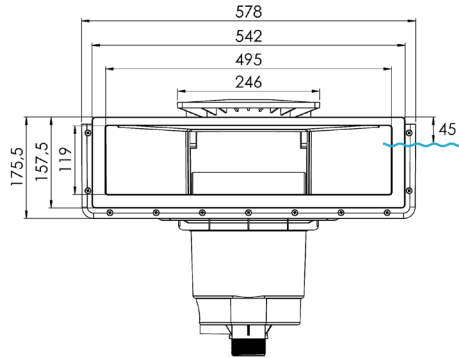
- One package containing the complete mouth + accessories
- One packaging containing the complete control unit + accessories

## WATER LINE

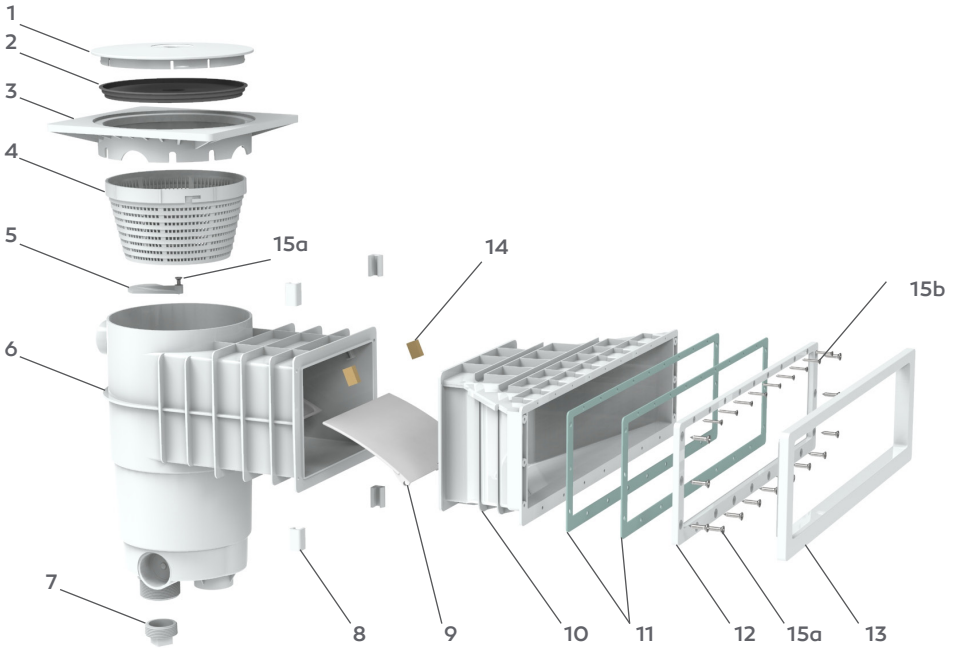
- concrete



- panel-liner



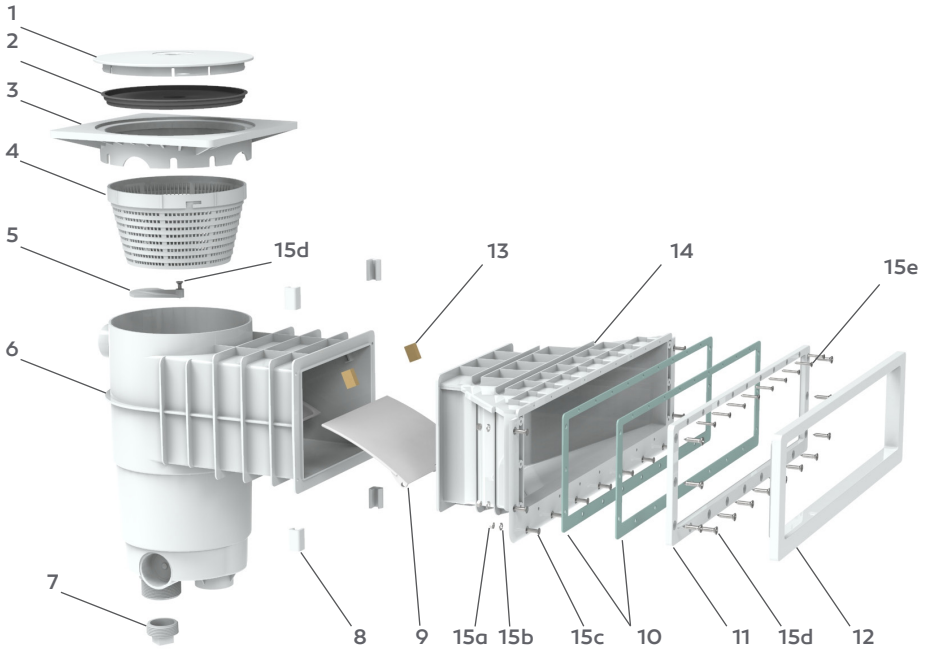
### CONCRETE KIT



| #   | REF   | DESCRIPTION                    | QUANTITY |
|-----|-------|--------------------------------|----------|
| 1   | 80176 | NEUTRAL COVER                  | 1        |
| 2   | 60360 | TEMPORARY PROTECTIVE COVER     | 1        |
| 4   | 62513 | SKIMMER / SKIMFILTER TELESCOPE | 1        |
| 5   | 60284 | SKIMMER BOTTOM SHUTTER         | 1        |
| 7   | 60392 | ONE-PIECE CONTROL UNIT         | 1        |
| 8   | 64130 | MOUTH CLAMP                    | 4        |
| 9   | 62341 | SKIMMER BARRIER                | 1        |
| 10  | 80470 | A500 DESIGN MOUTH - CONCRETE   | 1        |
| 11  | 80493 | A500 GASKET                    | 2        |
| 12  | 80491 | A500 COUNTER-FLANGE            | 1        |
| 13  | 80492 | A500 SCREW COVER               | 1        |
| 14  | 62461 | BARRIER STOP                   | 2        |
| 15a | 60469 | 5.5 X 25 MM FLAT-HEAD SCREW    | 13       |
| 15b | 62423 | 3.9 X 25 MM FLAT-HEAD SCREW    | 9        |

## 2. KIT COMPOSITION

### PANEL-LINER KIT



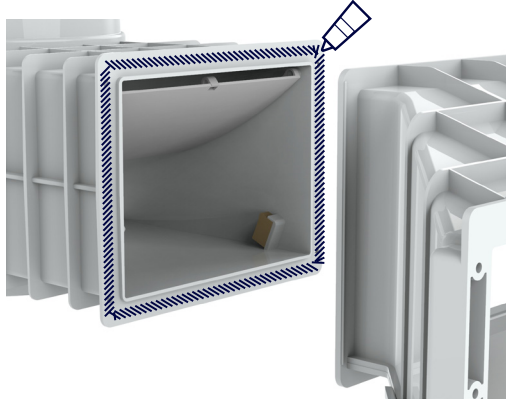
| #   | REF   | DESCRIPTION                    | QUANTITY |
|-----|-------|--------------------------------|----------|
| 1   | 80176 | NEUTRAL COVER                  | 1        |
| 2   | 60360 | TEMPORARY PROTECTIVE COVER     | 1        |
| 4   | 62513 | SKIMMER / SKIMFILTER TELESCOPE | 1        |
| 5   | 60284 | SKIMMER BOTTOM SHUTTER         | 1        |
| 7   | 60392 | ONE-PIECE CONTROL UNIT         | 1        |
| 8   | 64130 | MOUTH CLAMP                    | 4        |
| 9   | 62341 | SKIMMER BARRIER                | 1        |
| 10  | 80493 | A500 GASKET                    | 2        |
| 11  | 80491 | COUNTER-FLANGE A500            | 1        |
| 12  | 80492 | A500 SCREW COVER               | 1        |
| 13  | 62461 | BARRIER STOP                   | 2        |
| 14  | 80490 | A500 DESIGN MOUTH - PANEL      | 1        |
| 15a | 62419 | M5 STAINLESS STEEL WASHER      | 11       |
| 15b | 62420 | M5 STAINLESS STEEL NUT         | 11       |
| 15c | 62418 | M5 20-MM FLAT-HEAD SCREW       | 11       |
| 15d | 60469 | 5.5 X 25 MM FLAT-HEAD SCREW    | 13       |
| 15e | 62423 | 3.9 X 25 MM FLAT-HEAD SCREW    | 9        |

### 3. ASSEMBLY

ENG

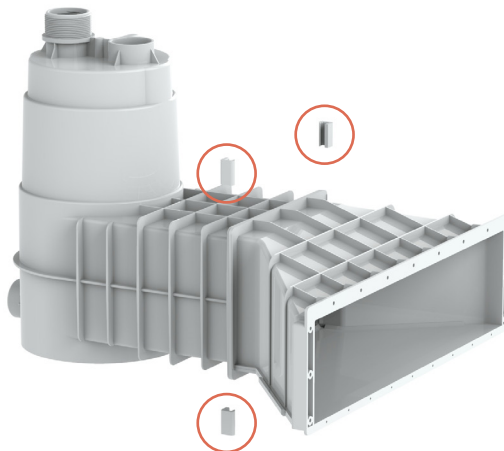
*The two sections of the Skimmer can be assembled before or after installation on the side of the pool.*

Apply a continuous bead of glue from the tube of glue provided in the kit to the area shown here (on both sections of the Skimmer).



**WARNING:** Once the two sections have been glued together, it will be nearly impossible to separate them after ½ hour has passed.

To hold the sections of the Skimmer in place while the glue is drying, attach the four clamps at the point of junction. Ensure contact is made all the way around the junction.

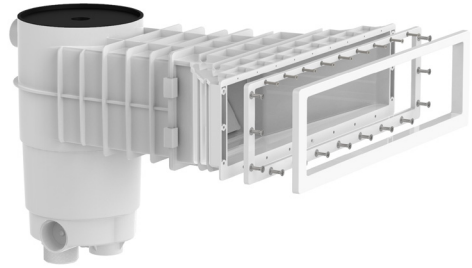


## 4. SET-UP

### CONCRETE KIT

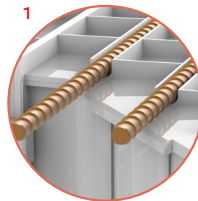
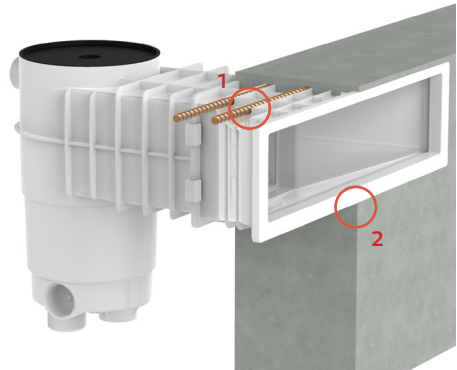
1

Assemble the flange and the screw cover on the mouth of the Skimmer.



2

- Place and chock the bottom of the control unit to stabilize the Skimmer horizontally.
- Set up the reinforcement around the Skimmer (note that the top ribs of the A500 mouth can accommodate rebar of  $\varnothing$  12 mm maximum (1)).
- Re-check the level of the control unit and then pour the concrete at the edge of the screw cover (2) (we recommend at least 30 mm of concrete over the control unit).

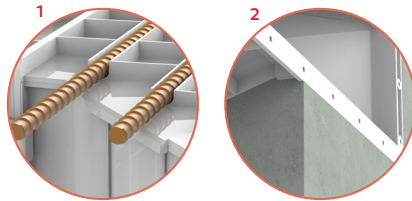
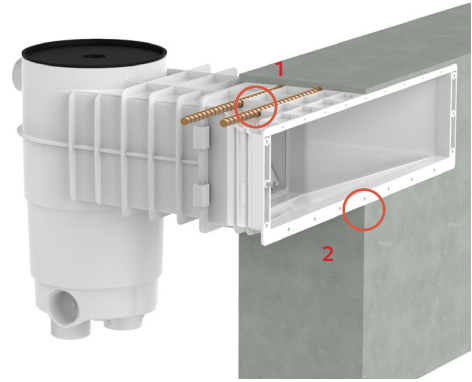




## CONCRETE-LINER KIT

1

- Place and chock the bottom of the control unit to stabilize the Skimmer horizontally.
- Set up the reinforcement around the Skimmer (note that the top ribs of the A500 mouth can accommodate rebar of  $\varnothing$  12 mm maximum (1)).
- Re-check the level of the control unit and then pour the concrete at the edge of the mouth (2) (we recommend at least 30 mm of concrete over the control unit).



2

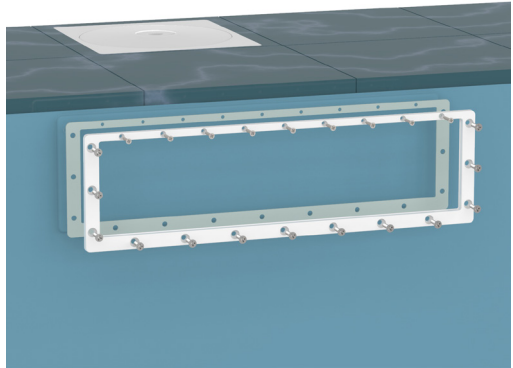
Affix the first flat gasket, with the adhesive side against the surface of the mouth. Then, install the liner (if present).



**3**

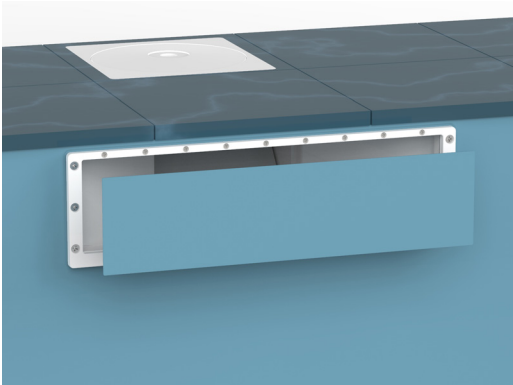
Affix the second gasket, with the adhesive side against the flange. Then, position the flange on the liner by lining up the holes with the mouth and then screw in all of the screws.

It is better to finish tightening these with a screwdriver rather than a screwdriver to avoid damaging the room.



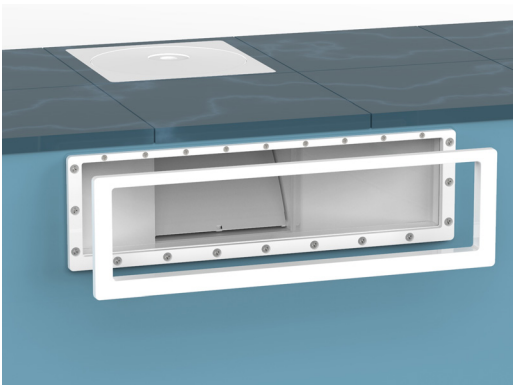
**4**

Use a box cutter to clear a hole the liner, so as to uncover the Skimmer's opening. Remove the liner offcuts.



**5**

Clip the screw cover to the flange.

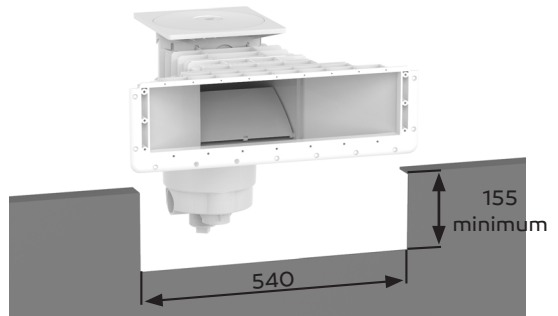


## PANEL-LINER KIT

1

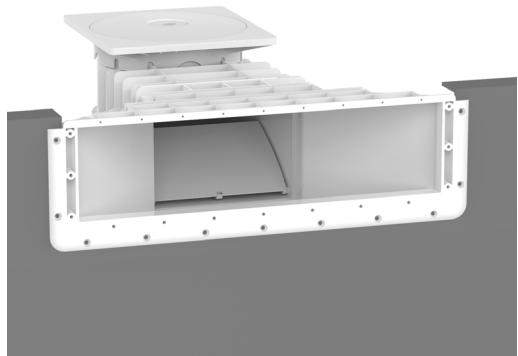
Cut a hole in the panel structure to accommodate the Skimmer.

155 mm (minimum) x 540 mm



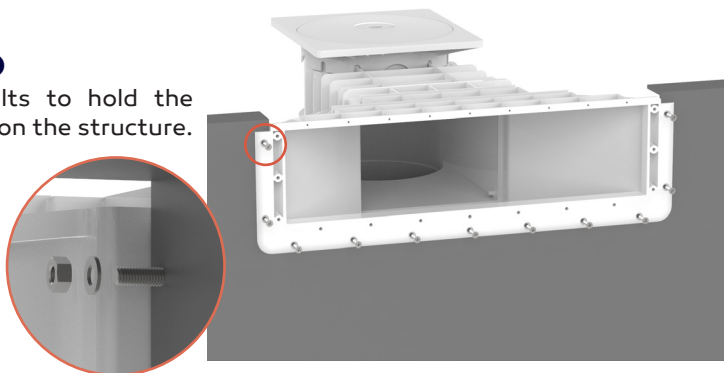
2

Position the Skimmer in the opening and then drill all of the holes ( $\varnothing$  5.5 mm) for the bolts. Remember to check the level of the control unit.



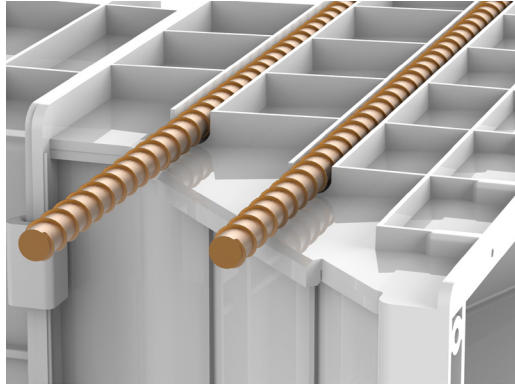
3

Screw in the bolts to hold the Skimmer in place on the structure.



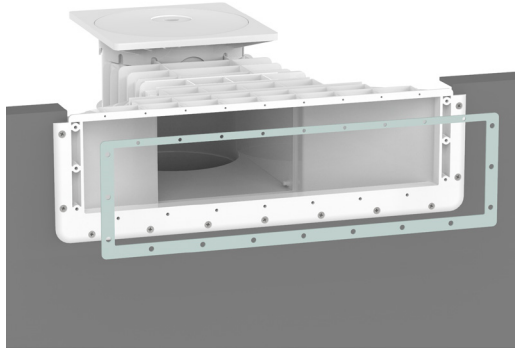
4

Set up the reinforcement around the Skimmer (note that the top ribs of the A500 mouth can accommodate rebar of  $\varnothing$  12 mm maximum).



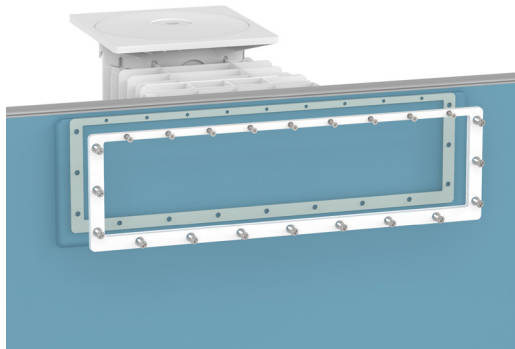
5

Affix the first flat gasket, with the adhesive side against the surface of the mouth.



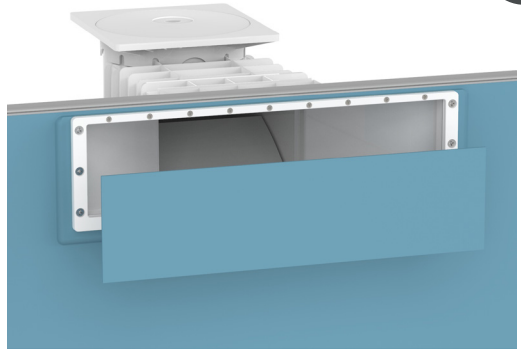
6

Install the liner. Affix the second gasket, with the adhesive side against the flange. Then, position the flange on the liner by lining up the holes with the mouth and then screw in all of the screws.



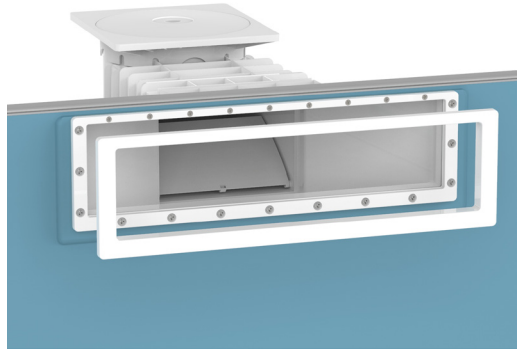
7

Use a box cutter to clear a hole the liner, so as to uncover the Skimmer's opening. Remove the liner offcuts.



8

Clip the screw cover to the flange.



# 1. MERKMALE

- Aus ABS-Kunststoff hergestellt
- UV-behandelt
- Geschwindigkeitsregler
- Geräuschlose schwimmende Abdeckung
- Überlauf 50 mm Außendurchmesser
- Ausgänge: - 50 mm Innendurchmesser (x2)  
- 1,5 Zoll innen oder 2 Zoll außen

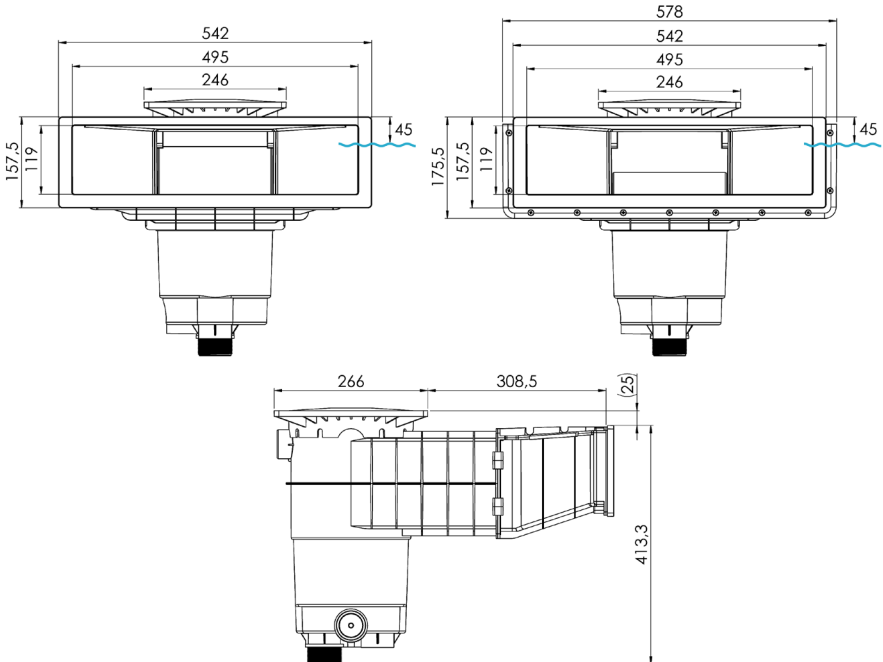
## EMPFANG DES MATERIALS

- Ein Paket mit der kompletten Saugöffnung und ihrem Zubehör
- Ein Paket mit der kompletten Steuereinheit und ihrem Zubehör

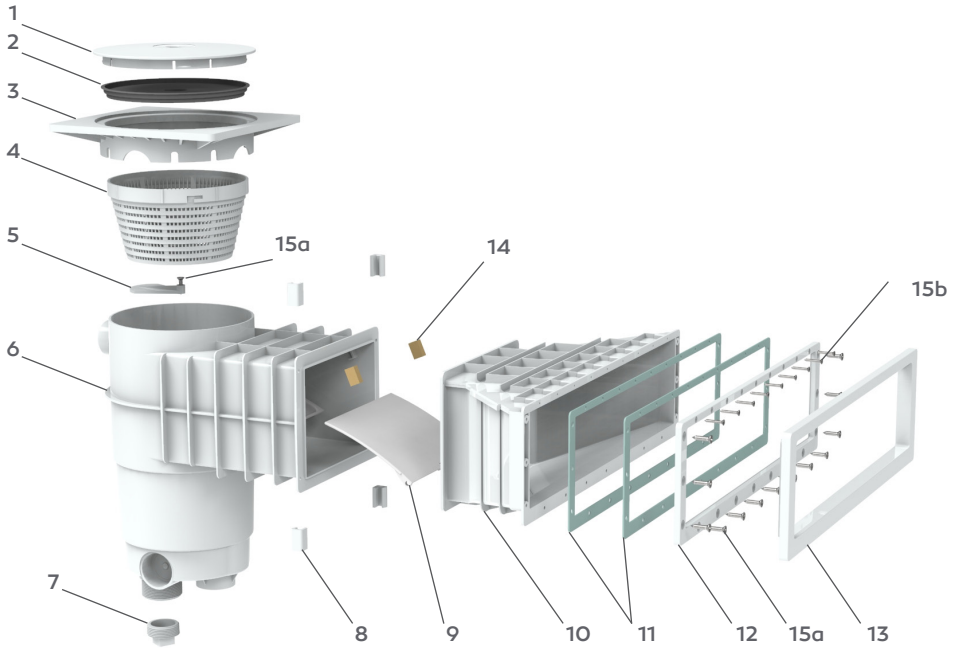
## WASSERLINIE

- betonschwimmbecken

- platten-schwimmbecken  
mit folienauskleidung



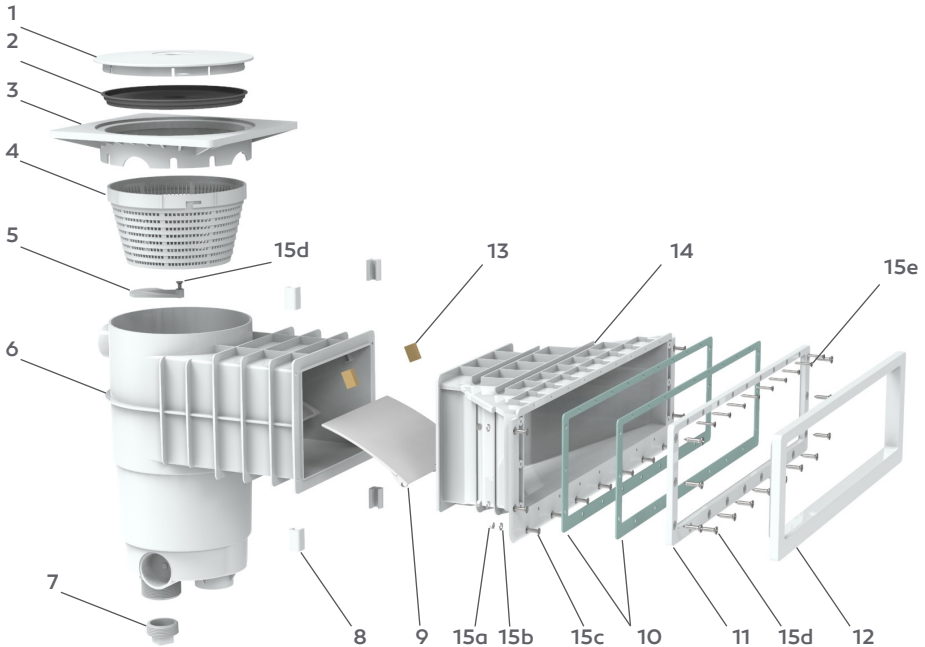
### BETONSCHWIMMBECKEN



| NR. | ART.-NR. | BEZEICHNUNG                       | MENGE |
|-----|----------|-----------------------------------|-------|
| 1   | 80176    | NEUTRALE ABDECKUNG                | 1     |
| 2   | 60360    | ABDECKUNG FÜR EINMALIGEN GEBRAUCH | 1     |
| 4   | 62513    | SKIMMER-TELESKOP/SKIMMERFILTER    | 1     |
| 5   | 60284    | STOPFEN DES SKIMMERBODENS         | 1     |
| 7   | 60392    | MONOBLOCKGEHÄUSE                  | 1     |
| 8   | 64130    | KLEMME SAUGÖFFNUNG                | 4     |
| 9   | 62341    | SKIMMERKLAPPE                     | 1     |
| 10  | 80470    | SAUGÖFFNUNG A500 DESIGN - BETON   | 1     |
| 11  | 80493    | DICHTUNG A500                     | 2     |
| 12  | 80491    | GEGENFLANSCH A500                 | 1     |
| 13  | 80492    | ABDECKBLENDE A500                 | 1     |
| 14  | 62461    | KLAPPENANSCHLAG                   | 2     |
| 15a | 60469    | SCHRAUBE TF 5,5X25                | 13    |
|     | 62423    | SCHRAUBE TF 3,9X25                | 9     |

## 2. ZUSAMMENSETZUNG DER KITS

### PLATTEN-SCHWIMMBECKEN MIT FOLIENAUSKLEIDUNG

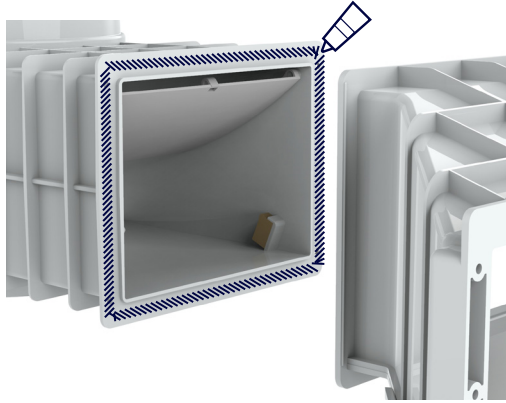


| NR. | NR. ART. | BEZEICHNUNG                       | MENGE |
|-----|----------|-----------------------------------|-------|
| 1   | 80176    | NEUTRALE ABDECKUNG                | 1     |
| 2   | 60360    | ABDECKUNG FÜR EINMALIGEN GEBRAUCH | 1     |
| 4   | 62513    | SKIMMER-TELESKOP/SKIMMERFILTER    | 1     |
| 5   | 60284    | STOPFEN DES SKIMMERBODENS         | 1     |
| 7   | 60392    | MONOBLOCKGEHÄUSE                  | 1     |
| 8   | 64130    | KLEMME SAUGÖFFNUNG                | 4     |
| 9   | 62341    | SKIMMERKLAPPE                     | 1     |
| 10  | 80493    | DICHTUNG A500                     | 2     |
| 11  | 80491    | GEGENFLANSCH A500                 | 1     |
| 12  | 80492    | ABDECKBLENDE A500                 | 1     |
| 13  | 62461    | KLAPPENANSCHLAG                   | 2     |
| 14  | 80490    | SAUGÖFFNUNG A500 DESIGN - PLATTE  | 1     |
| 15a | 62419    | EDELSTAHL-BEILAGSCHEIBE M5        | 11    |
| 15b | 62420    | EDELSTAHL-MUTTER M5               | 11    |
| 15c | 62418    | SCHRAUBE TF M5X20                 | 11    |
| 15d | 60469    | SCHRAUBE TF 5,5X25                | 13    |
| 15e | 62423    | SCHRAUBE TF 3,9X25                | 9     |



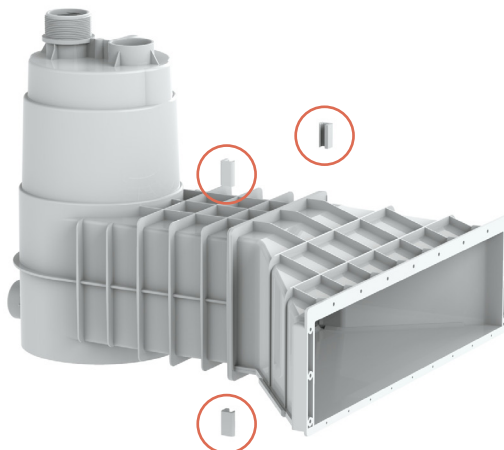
*Die beiden Teile des Skimmers können vor oder nach der Befestigung an der Beckenwand zusammengebaut werden.*

Tragen Sie auf der dargestellten Fläche (auf beiden Teilen des Skimmers) mithilfe der mitgelieferten Tube einen Strang Klebstoff auf.



**ACHTUNG:** Wenn die beiden Teile zusammengeklebt sind, ist es nach Ablauf einer halben Stunde beinahe unmöglich, sie wieder zu trennen.

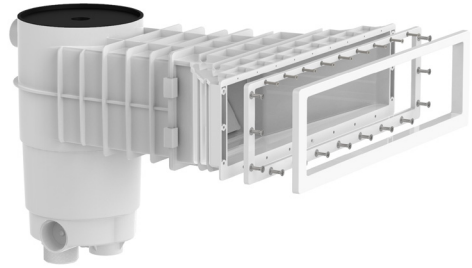
Damit die Skimmerteile gut zusammengepresst bleiben, schieben Sie die vier Klemmen auf die Nahtstelle des Skimmers. Prüfen Sie, ob die beiden Teile über die gesamte Nahtstelle gut zusammengedrückt werden.



### BETONSCHWIMMBECKEN

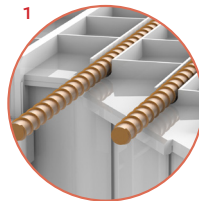
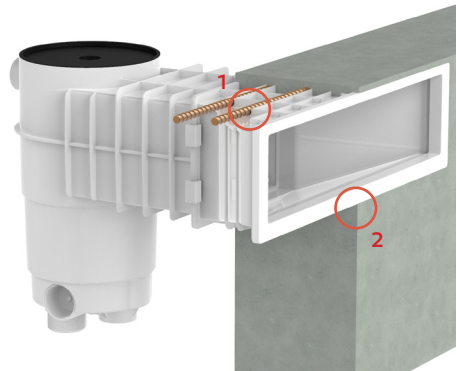
1

Befestigen Sie den Flansch und die Abdeckblende auf der Saugöffnung des Skimmers.



2

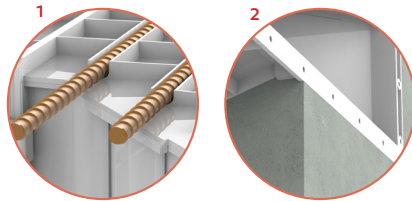
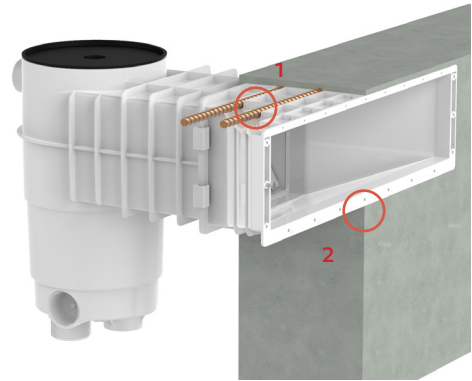
- Positionieren Sie den Unterboden des Gehäuses, um den Skimmer waagrecht zu stabilisieren.
- Bringen Sie die Armierung rund um den Skimmer an (die oberen Rippen der Saugöffnung A500 können Betoneisen von max. Ø12mm aufnehmen).<sup>1</sup>
- Prüfen Sie die waagrechte Ausrichtung des Gehäuses erneut und gießen Sie mit Beton bündig bis zur Abdeckblende aus<sup>2</sup> (wir empfehlen eine Betonschicht von mindestens 30 mm über dem Gehäuse).



## BETONSCHWIMMBECKEN MIT FOLIENAUSKLEIDUNG

1

- Positionieren Sie den Unterboden des Gehäuses, um den Skimmer waagrecht zu stabilisieren.
- Bringen Sie die Armierung rund um den Skimmer an (die oberen Rippen der Saugöffnung A500 können Betoneisen von max. Ø12mm aufnehmen).<sup>1</sup>
- Prüfen Sie die waagrechte Ausrichtung des Gehäuses erneut und gießen Sie mit Beton bündig bis zur Saugöffnung aus<sup>2</sup> (wir empfehlen eine Betonschicht von mindestens 30 mm über dem Gehäuse).



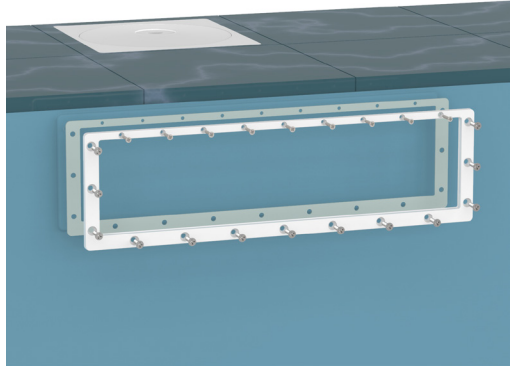
2

Setzen Sie die erste Flachdichtung auf die Saugöffnung, sodass die Klebeseite zur Saugöffnung zeigt. Positionieren Sie anschließend die Folie (falls vorhanden).



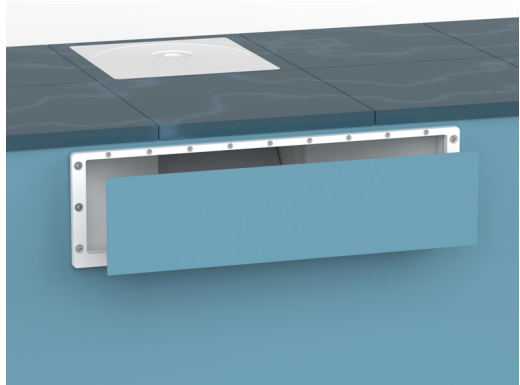
**3**

Positionieren Sie die zweite Flachdichtung mit der Klebeseite auf den Flansch. Positionieren Sie anschließend den Flansch auf die Folie, wobei Sie auf die korrekte Ausrichtung der Achsen der Löcher mit der Saugöffnung achten. Ziehen Sie anschließend alle Schrauben fest. Es ist besser, diese mit einem Schraubendreher als mit einem Schraubendreher festzuziehen, um eine Beschädigung des Teils zu vermeiden.



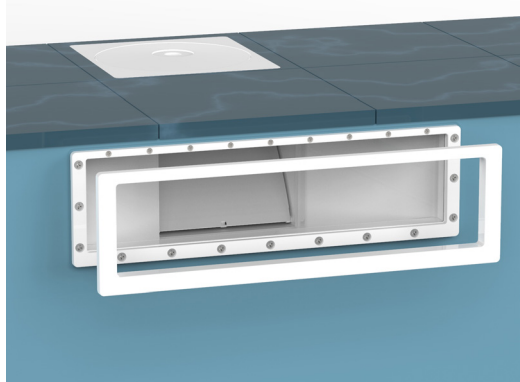
**4**

Schneiden Sie mithilfe eines Cutters die Folie aus, sodass die Öffnung des Skimmers frei liegt. Entfernen Sie die ausgeschnittene Folie.



**5**

Bringen Sie die die Abdeckblende auf dem Flansch an.

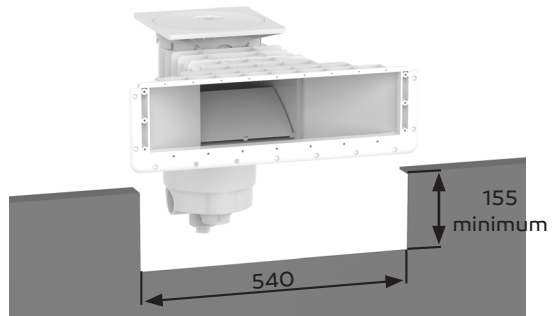


## PLATTEN-SCHWIMMBECKEN MIT FOLIENAUSKLEIDUNG

1

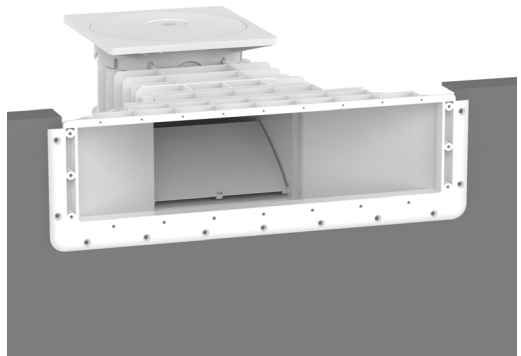
Fertigen Sie den Ausschnitt in der Plattenstruktur an, in der der Skimmer eingebaut werden soll.

155 mm (min.) x 540 mm



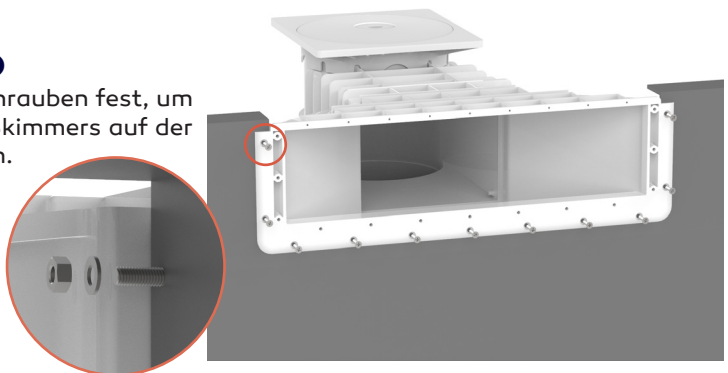
2

Positionieren Sie den Skimmer im Ausschnitt und bohren Sie alle Löcher ( $\varnothing$  5,5 mm) für die Schrauben. Denken Sie daran, die richtige Ausrichtung des Gehäuses zu prüfen.



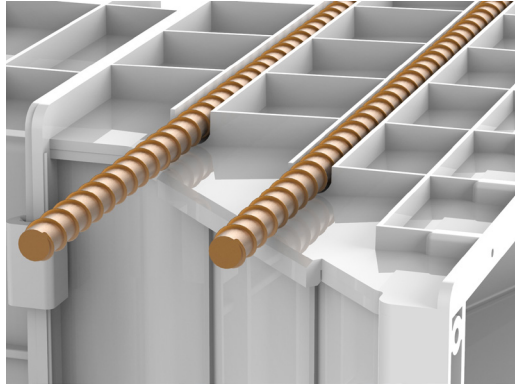
3

Ziehen Sie die Schrauben fest, um die Position des Skimmers auf der Struktur zu halten.



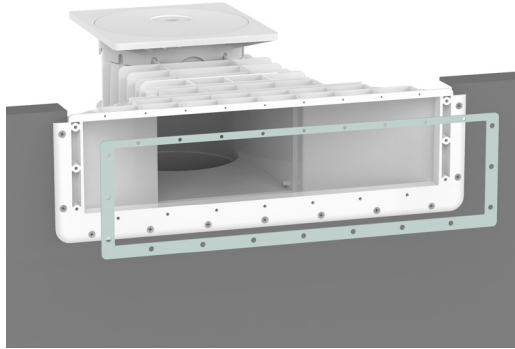
4

Bringen Sie die Armierung rund um den Skimmer an (die oberen Rippen der Saugöffnung A500 können Betoneisen von max. Ø12mm aufnehmen).



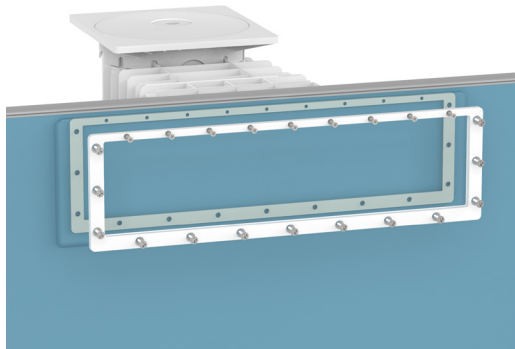
5

Setzen Sie die erste Flachdichtung auf die Saugöffnung, sodass die Klebeseite zur Saugöffnung zeigt.



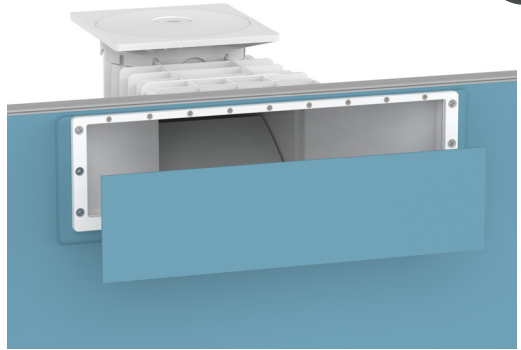
6

Bringen Sie die Folie an. Positionieren Sie die zweite Flachdichtung mit der Klebeseite auf den Flansch. Positionieren Sie anschließend den Flansch auf die Folie, wobei Sie auf die korrekte Ausrichtung der Achsen der Löcher mit der Saugöffnung achten. Ziehen Sie anschließend alle Schrauben fest.



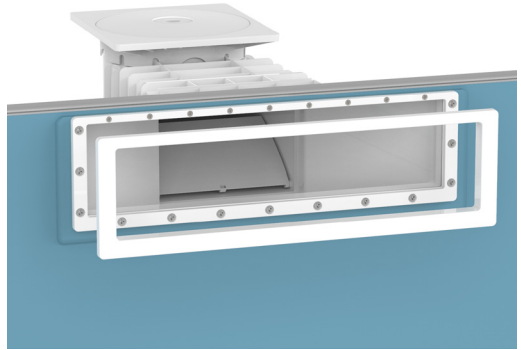
7

Schneiden Sie mithilfe eines Cutters die Folie aus, sodass die Öffnung des Skimmers frei liegt. Entfernen Sie die ausgeschnittene Folie.



8

Bringen Sie die die Abdeckblende auf dem Flansch an.



# 1. ESPECIFICACIONES

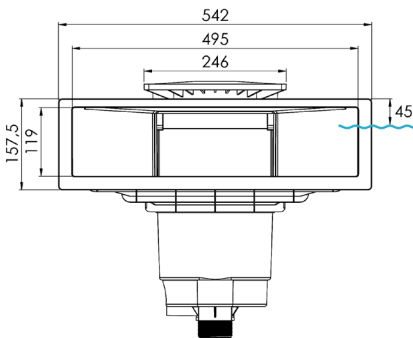
- Fabricado con ABS
- Con tratamiento anti-UV
- Obturador de ajuste
- Compuerta flotante silenciosa
- Rebosadero  $\varnothing$  50 mm exterior
- Salidas: -  $\varnothing$  50 mm interior (x 2)  
- 1"1/2 interior o 2" exterior
- 

## RECEPCIÓN DEL EQUIPO

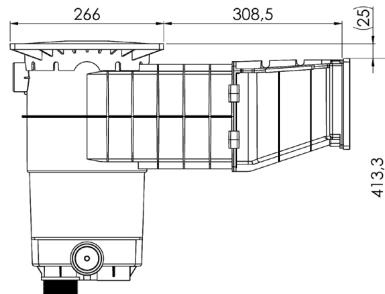
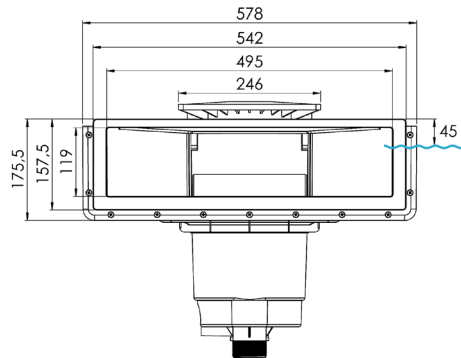
- Un paquete con la tronera completa + sus accesorios.
- Un paquete con el cuerpo completo + sus accesorios.

## LÍNEA DE AGUA

### - hormigón

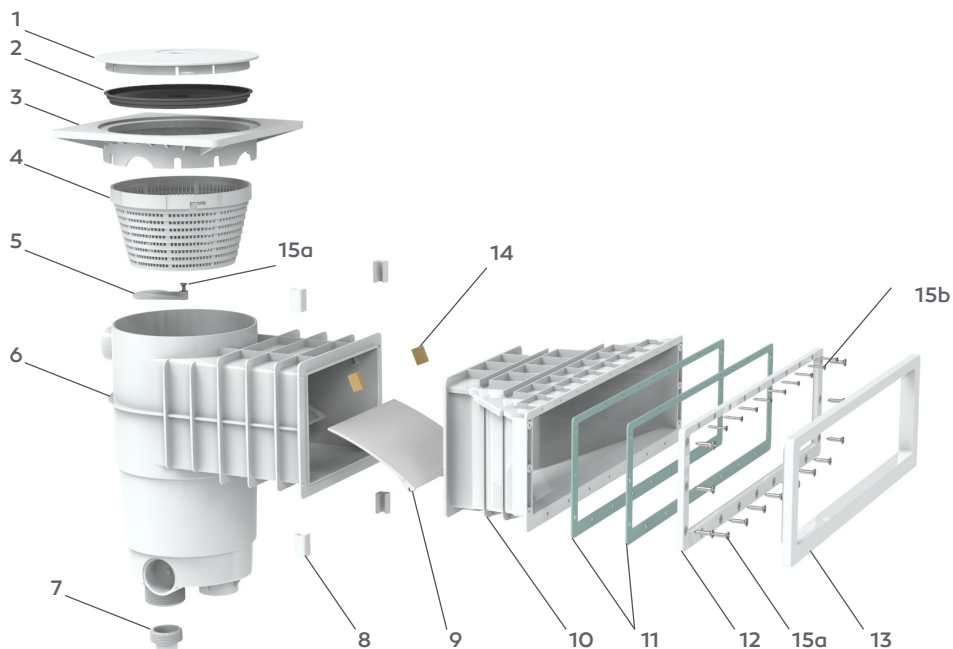


### - panel-líner





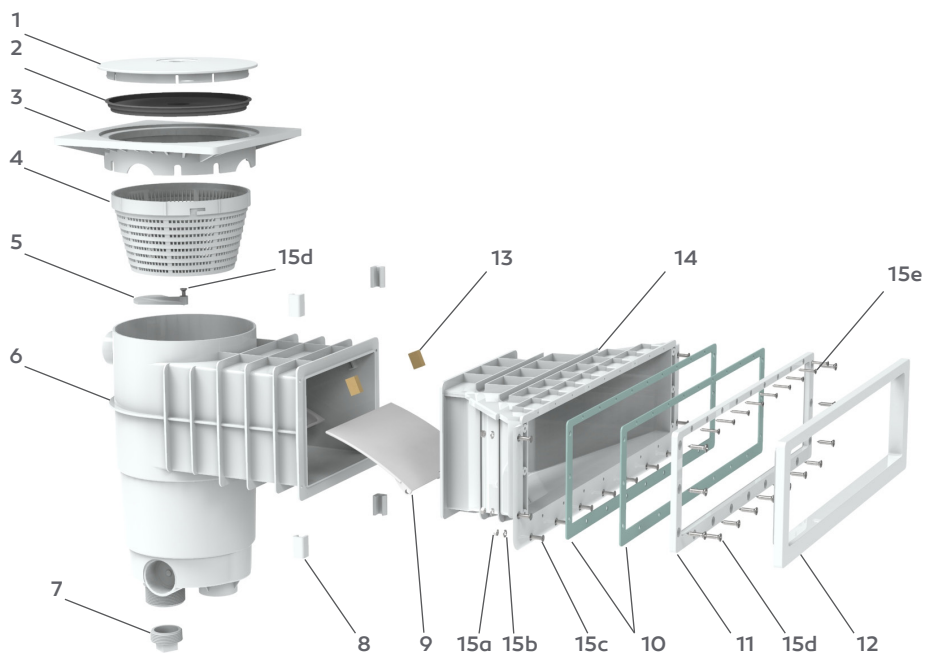
### VERSIÓN HORMIGÓN



| Nº  | REF   | DENOMINACIÓN                    | CANTIDAD |
|-----|-------|---------------------------------|----------|
| 1   | 80176 | TAPA NEUTRA                     | 1        |
| 2   | 60360 | TAPA DE USO ÚNICO               | 1        |
| 4   | 62513 | TELESCOPIO SKIMMER / SKIMFILTRE | 1        |
| 5   | 60284 | OBTURADOR DE FONDO SKIMMER      | 1        |
| 7   | 60392 | CUERPO MONOBLOQUE               | 1        |
| 8   | 64130 | PINZAS TRONERA                  | 4        |
| 9   | 62341 | PORTEZUELA PARA SKIMMER         | 1        |
| 10  | 80470 | TRONERA A500 DESIGN - HORMIGÓN  | 1        |
| 11  | 80493 | JUNTA A500                      | 2        |
| 12  | 80491 | CONTRABRIDA A500                | 1        |
| 13  | 80492 | EMBELECEDOR A500                | 1        |
| 14  | 62461 | TOPE DE PORTEZUELA              | 2        |
| 15a | 60469 | TORNILLO TF 5,5 X 25            | 13       |
|     | 62423 | TORNILLO TF 3,9 X 25            | 9        |

## 2. COMPOSICIÓN DE LOS KITS

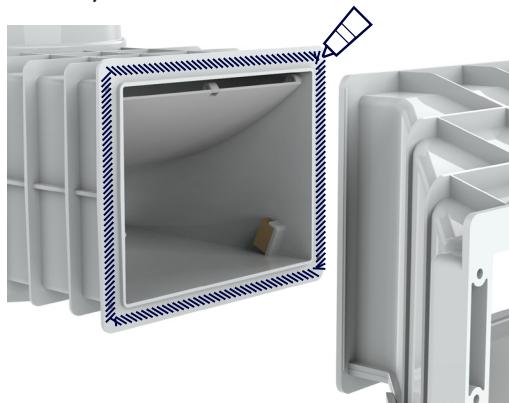
### VERSIÓN PANEL-LÍNER



| Nº  | REF   | DENOMINACIÓN                    | CANTIDAD |
|-----|-------|---------------------------------|----------|
| 1   | 80176 | TAPA NEUTRA                     | 1        |
| 2   | 60360 | TAPA DE USO ÚNICO               | 1        |
| 4   | 62513 | TELESCOPIO SKIMMER / SKIMFILTRE | 1        |
| 5   | 60284 | OBTURADOR DE FONDO SKIMMER      | 1        |
| 7   | 60392 | CUERPO MONOBLOQUE               | 1        |
| 8   | 64130 | PINZAS TRONERA                  | 4        |
| 9   | 62341 | PORTEZUELA PARA SKIMMER         | 1        |
| 10  | 80493 | JUNTA A500                      | 2        |
| 11  | 80491 | CONTRABRIDA A500                | 1        |
| 12  | 80492 | EMBELLECEDOR A500               | 1        |
| 13  | 62461 | TOPE DE PORTEZUELA              | 2        |
| 14  | 80490 | TRONERA A500 DESIGN - PANEL     | 1        |
| 15a | 62419 | ARANDELA ACERO INOXIDABLE M5    | 11       |
| 15b | 62420 | TUERCA ACERO INOXIDABLE M5      | 11       |
| 15c | 62418 | TORNILLO TF M5 X 20             | 11       |
| 15d | 60469 | TORNILLO TF 5,5 X 25            | 13       |
| 15e | 62423 | TORNILLO TF 3,9 X 25            | 9        |

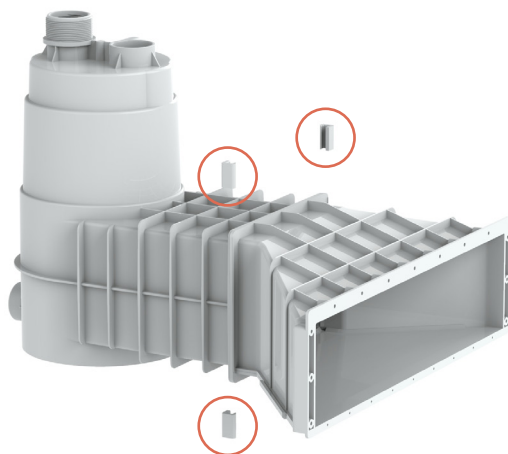
*Las dos piezas del skimmer se pueden montar antes o después de la instalación en la pared.*

Aplique un cordón de adhesivo continuo en la superficie indicada (en ambas piezas del skimmer) con el tubo de adhesivo suministrado.



**ATENCIÓN:** Una vez pegadas ambas piezas, será casi imposible separarlas al cabo de una media hora.

Para simplificar el mantenimiento de las piezas del skimmer, deslice las cuatro pinzas hasta la unión del skimmer. Asegúrese de que esté en contacto todo el contorno de la unión.

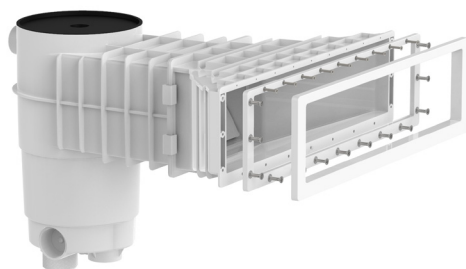


## 4. INSTALACIÓN

### VERSIÓN HORMIGÓN

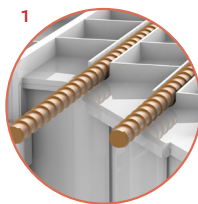
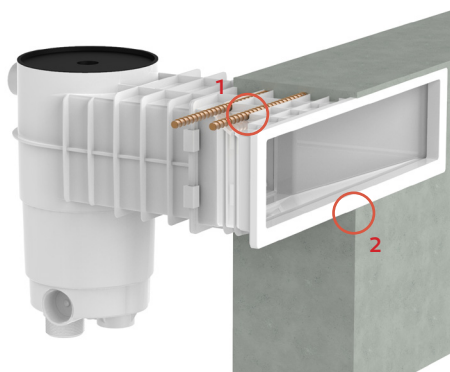
1

Monte la brida y el embellecedor de los tornillos en la tronera del skimmer.



2

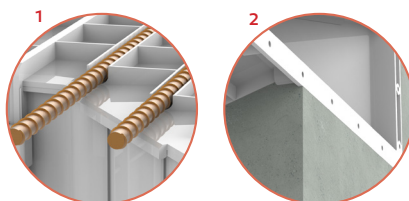
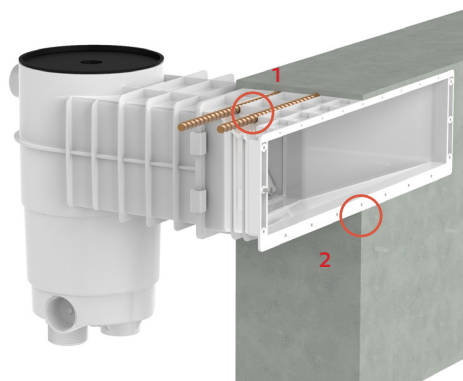
- Coloque el cuerpo y cácelo por debajo para estabilizar el skimmer en horizontal.
- Instale las varillas alrededor del skimmer (observe que los nervios superiores de la tronera A500 pueden albergar varillas para hormigón de  $\varnothing 12$  mm como máximo<sup>1</sup>).
- Vuelva a comprobar la nivelación del cuerpo, y luego vierta el hormigón al ras del embellecedor<sup>2</sup> (recomendamos al menos 30 mm de hormigón por encima del cuerpo).



## VERSIÓN HORMIGÓN-LÍNER

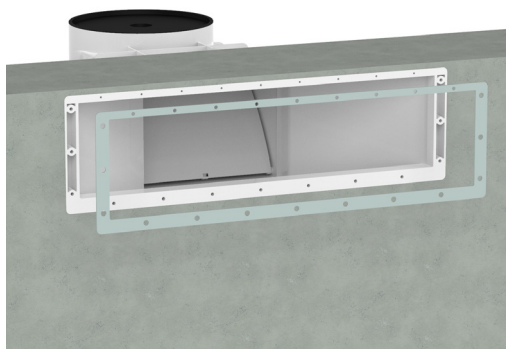
1

- Coloque el cuerpo y cácelo por debajo para estabilizar el skimmer en horizontal.
- Instale las varillas alrededor del skimmer (observe que los nervios superiores de la tronera A500 pueden albergar varillas para hormigón de  $\varnothing$  12 mm como máximo<sup>1</sup>).
- Vuelva a comprobar la nivelación del cuerpo, y luego vierta el hormigón al ras de la tronera<sup>2</sup> (recomendamos al menos 30 mm de hormigón por encima del cuerpo).



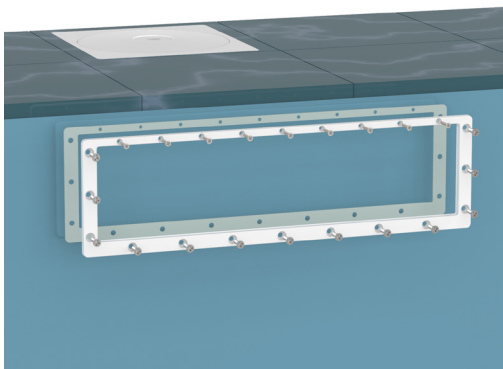
2

Coloque la primera junta plana con la cara adhesiva hacia la superficie de la tronera. A continuación, proceda a colocar el líner (si existe).



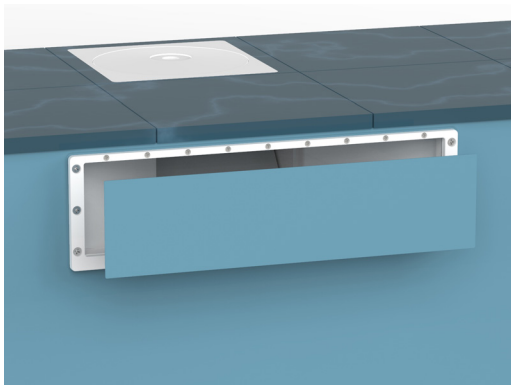
**3**

Coloque la segunda junta plana con la cara adhesiva hacia la brida. A continuación, coloque la brida en el líner alineando los ejes de los orificios con la tronera, y luego sujete el conjunto con los tornillos. Es mejor terminar de apretarlos con un destornillador en lugar de un destornillador para evitar dañar la pieza.



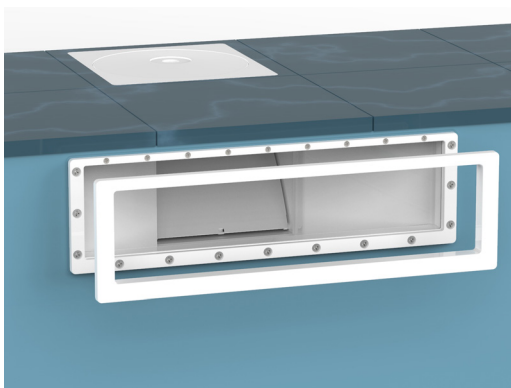
**4**

Con un cúter, recorte el líner de manera que la abertura del skimmer quede al descubierto. Retire el recorte de líner.



**5**

Enganche el embellecedor a la brida.

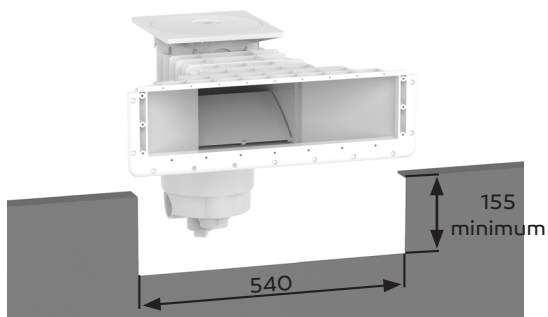


## VERSION PANNEAU-LINER

1

Haga un recorte en la estructura del panel para alojar el skimmer.

155 mm (mínimo) x 540 mm



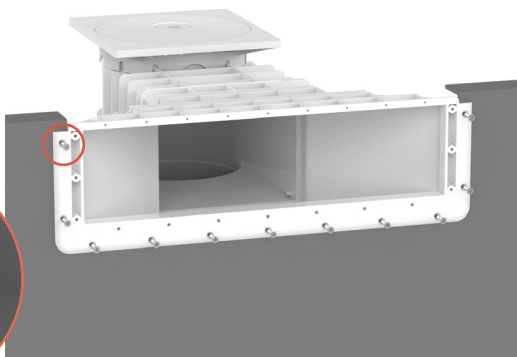
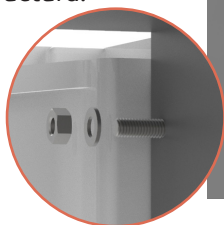
2

Coloque el skimmer en la abertura, y luego taladre ( $\varnothing$  5,5 mm) todos los orificios para los pernos. No olvide controlar la nivelación del cuerpo.



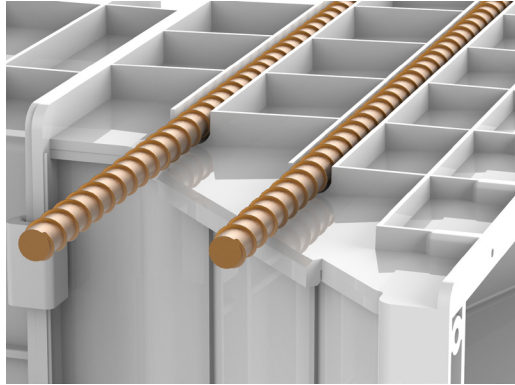
3

Enrosque las tuercas a los pernos para mantener el skimmer en posición en la estructura.



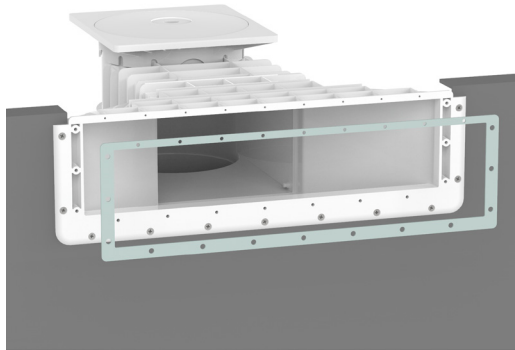
4

Instale las varillas alrededor del skimmer (observe que los nervios superiores de la tronera A500 pueden albergar varillas para hormigón de  $\varnothing$  12 mm como máximo).



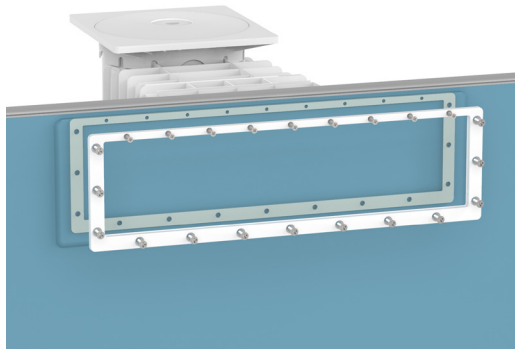
5

Coloque la primera junta plana con la cara adhesiva hacia la superficie de la tronera.



6

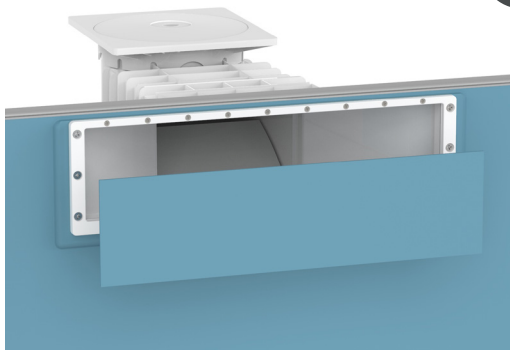
Proceda a colocar el líner. Coloque la segunda junta plana con la cara adhesiva hacia la brida. A continuación, coloque la brida en el líner alineando los ejes de los orificios con la tronera, y luego sujete el conjunto con los tornillos.





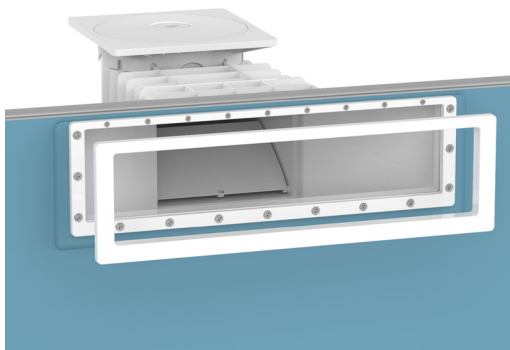
7

Con un cúter, recorte el líner de manera que la abertura del skimmer quede al descubierto. Retire el recorte de líner.



8

Enganche el embellecedor a la brida.



# 1. CARATTERISTICHE

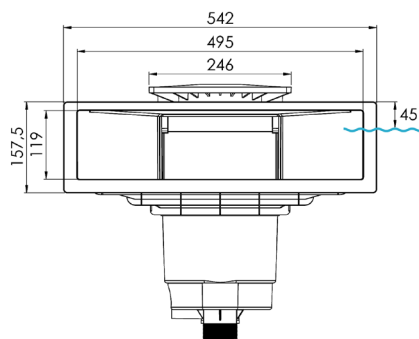
- Costruito in ABS
- Trattato contro i raggi UV
- Otturatore di regolazione
- Copertura a tapparella silenziosa
- Trabocco Ø50 mm esterno
- Uscite: - Ø50 mm interno (x2)  
- 1"1/2 interno o 2" esterno

## RICEZIONE DEL MATERIALE

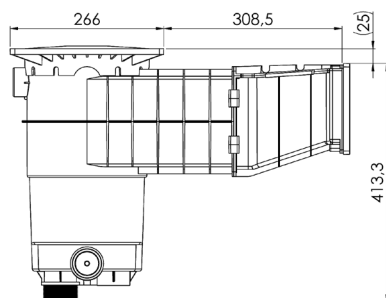
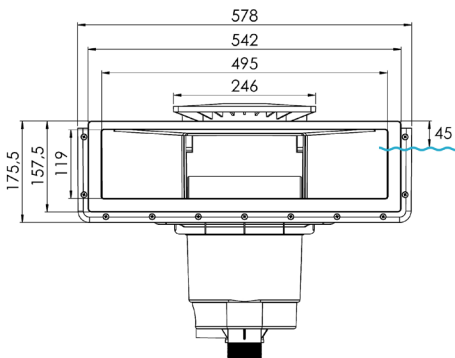
- Un pacco contenente la bocchetta completa e gli accessori
- Un pacco contenente la scatola completa e gli accessori

## LINEA DELL'ACQUA

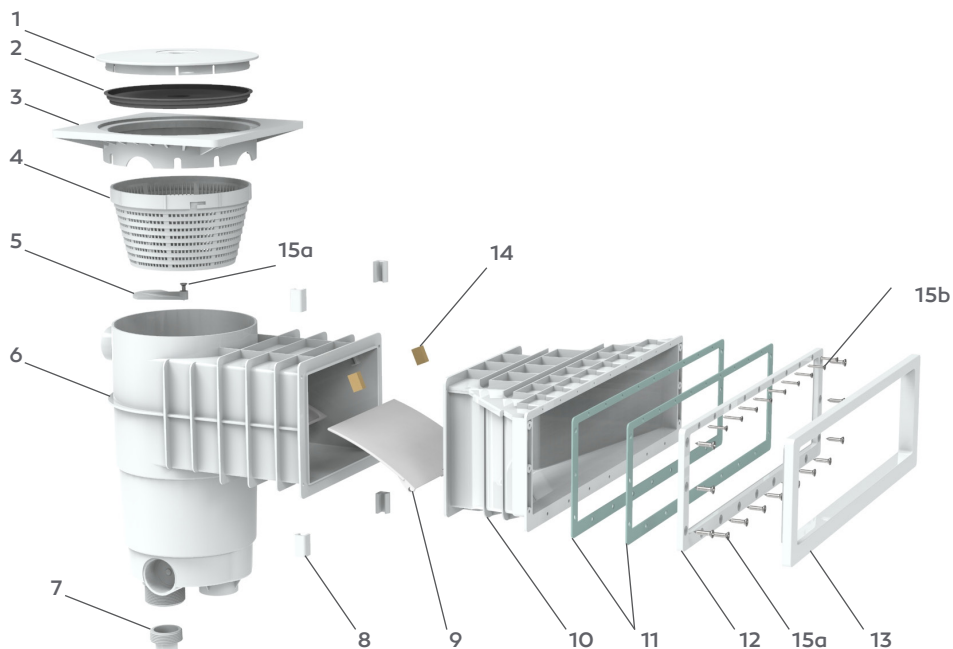
- cemento



- pannello-rivestimento



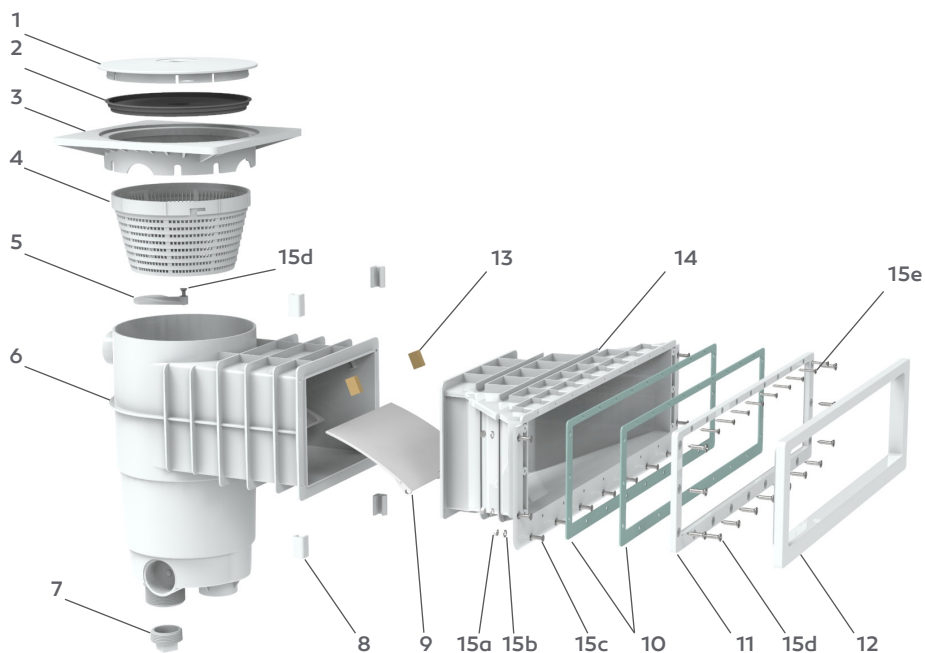
### VERSIONE CEMENTO



| N°  | RIF   | NOME                            | QUANTITÀ |
|-----|-------|---------------------------------|----------|
| 1   | 80176 | COPERCHIO NEUTRO                | 1        |
| 2   | 60360 | COPERCHIO A UTILIZZO UNICO      | 1        |
| 4   | 62513 | CORNICE SKIMMER                 | 1        |
| 5   | 60284 | OTTURATORE DI FONDO SKIMMER     | 1        |
| 7   | 60392 | ALLOGGIO MONOBLOCCO             | 1        |
| 8   | 64130 | MORSETTI BOCCHETTA              | 4        |
| 9   | 62341 | BATTENTE PER SKIMMER            | 1        |
| 10  | 80470 | BOCCHETTA A500 DESIGN - CEMENTO | 1        |
| 11  | 80493 | GUARNIZIONE A500                | 2        |
| 12  | 80491 | CONTROFLANGIA A500              | 1        |
| 13  | 80492 | NASCONDI VITE A500              | 1        |
| 14  | 62461 | FERMO BATTENTE                  | 2        |
| 15a | 60469 | VITE TF 5.5X25                  | 13       |
| 15b | 62423 | VITE TF 3.9X25                  | 9        |

## 2. COMPOSIZIONE DEI KIT

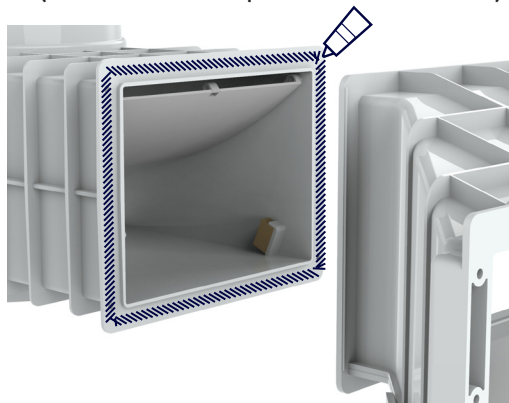
### VERSIONE PANNELLO-RIVESTIMENTO



| N°  | RIF   | NOME                             | QUANTITÀ |
|-----|-------|----------------------------------|----------|
| 1   | 80176 | COPERCHIO NEUTRO                 | 1        |
| 2   | 60360 | COPERCHIO A UTILIZZO UNICO       | 1        |
| 4   | 62513 | CORNICE SKIMMER                  | 1        |
| 5   | 60284 | OTTURATORE DI FONDO SKIMMER      | 1        |
| 7   | 60392 | ALLOGGIO MONOBLOCCO              | 1        |
| 8   | 64130 | MORSETTI BOCCHETTA               | 4        |
| 9   | 62341 | BATTENTE PER SKIMMER             | 1        |
| 10  | 80493 | GUARNIZIONE A500                 | 2        |
| 11  | 80491 | CONTROFLANGIA                    | 1        |
| 12  | 80492 | NASCONDI VITE A500               | 1        |
| 13  | 62461 | FERMO BATTENTE                   | 2        |
| 14  | 80490 | BOCCHETTA A500 DESIGN - PANNELLO | 1        |
| 15a | 62419 | RONDELLA INOX M5                 | 11       |
| 15b | 62420 | DADO INOX M5                     | 11       |
| 15c | 62418 | VITE TF M5X20                    | 11       |
| 15d | 60469 | VITE TF 5.5X25                   | 13       |
| 15e | 62423 | VITE TF 3.9X25                   | 9        |

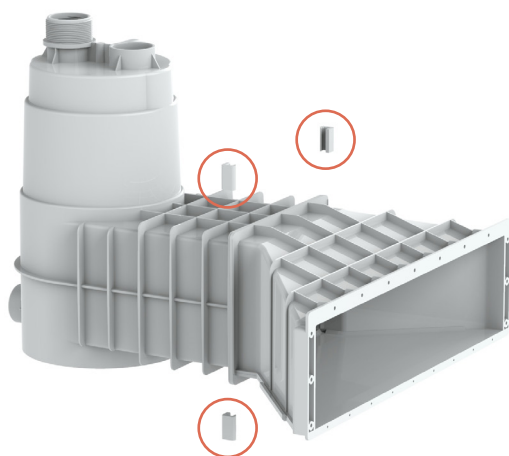
*Le due componenti dello skimmer possono essere montate prima o dopo il montaggio su parete.*

Mediante il tubo di colla fornito, applicare un filo di colla continuo sulla superficie indicata (su entrambe le parti dello skimmer).



**ATTENZIONE:** Una volta che le due componenti sono state incollate, è praticamente impossibile staccarle dopo 1/2 ore.

Per semplificare la tenuta delle componenti dello skimmer, inserire i quattro morsetti nella giunzione dello skimmer. Accertarsi che la giunzione tocchi l'intero perimetro.

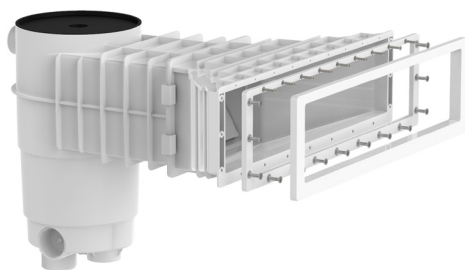


## 4. MONTAGGIO

### VERSIONE CEMENTO

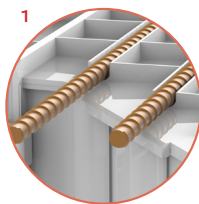
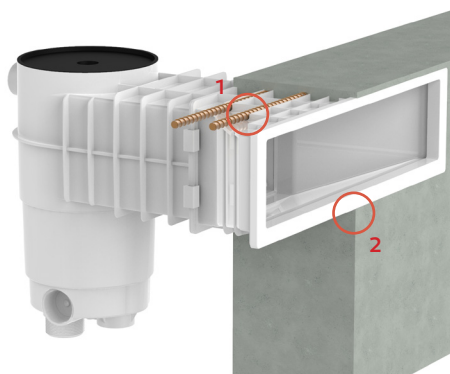
1

Montare la flangia e il nascondi vite sulla bocchetta dello skimmer.



2

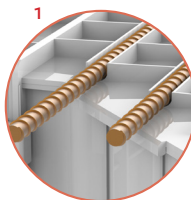
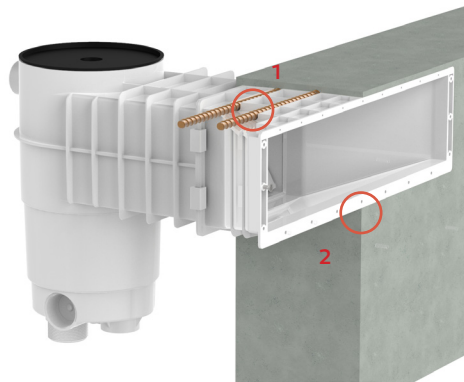
- Posizionare e quindi bloccare la parte inferiore dell'alloggio per fissare lo skimmer in posizione orizzontale.
- Posizionare l'armatura attorno allo skimmer (da notare che il reticolato superiore della bocchetta A500 è in grado di ospitare tondini per il cemento da  $\varnothing 12$  mm max.<sup>1)</sup>).
- Riverificare il livello della scatola e poi colare il cemento alla base del nascondi vite<sup>2</sup> (suggeriamo min. 30 mm di cemento sopra la scatola).



**VERSIONE CEMENTO-RIVESTIMENTO**

**1**

- Posizionare e quindi bloccare la parte inferiore della scatola per fissare lo skimmer in posizione orizzontale.
- Posizionare l'armatura attorno allo skimmer (da notare che il reticolato superiore della bocchetta A500 è in grado di ospitare tondini per il cemento da Ø12 mm max.<sup>1)</sup>).
- Riverificare il livello della scatola e poi colare il cemento alla base della bocchetta<sup>2</sup> (suggeriamo min. 30 mm di cemento sopra la scatola).



**2**

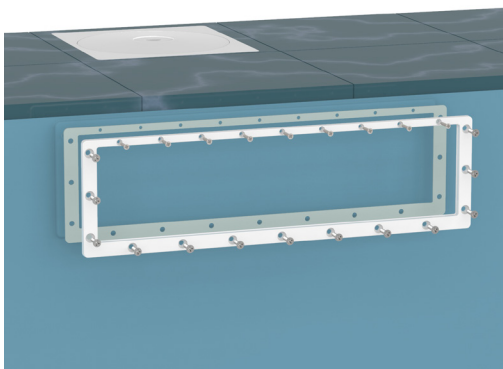
Posizionare la prima guarnizione piatta adesiva sul perimetro della bocchetta. Procedere quindi al posizionamento del rivestimento (se presente).



**3**

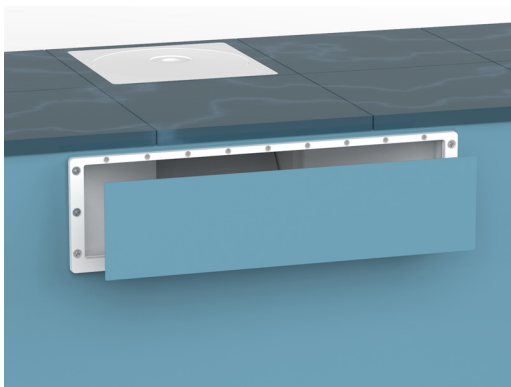
Posizionare la seconda guarnizione piatta adesiva sulla flangia. Posizionare quindi la flangia sul rivestimento allineando gli assi dei fori con la bocchetta, quindi avvitarle tutte le viti.

È meglio finire di serrarli con un cacciavite piuttosto che con un cacciavite per evitare di danneggiare la parte.



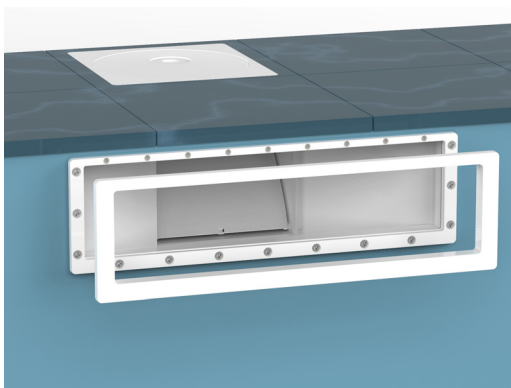
**4**

Aiutandosi con un taglierino, ritagliare il rivestimento, in modo da scoprire l'apertura dello skimmer. Rimuovere la parte di rivestimento ritagliato.



**5**

Fissare il nascondi vite sulla flangia.



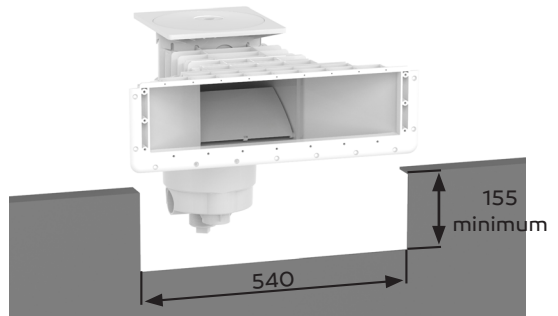


## VERSIONE PANNELLO-RIVESTIMENTO

**1**

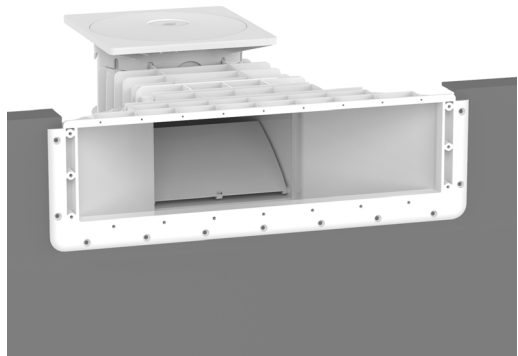
Realizzare un ritaglio nella struttura del pannello che ospiterà lo skimmer.

155 mm (minimo) x 540 mm



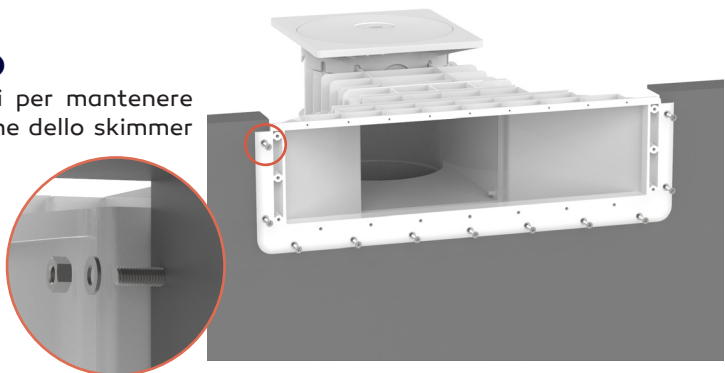
**2**

Posizionare lo skimmer nell'apertura e poi forare ( $\varnothing 5.5$  mm) l'insieme dei fori per i bulloni. Ricordarsi di verificare il livello della scatola.



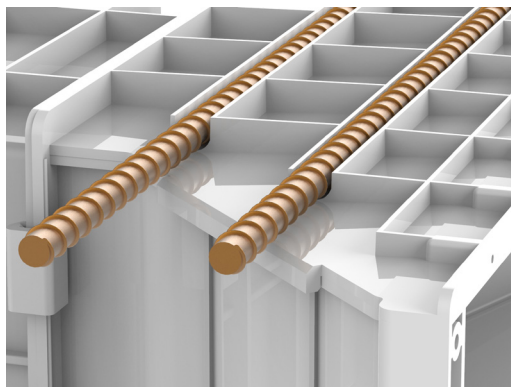
**3**

Avvitare i bulloni per mantenere stabile la posizione dello skimmer sulla struttura.



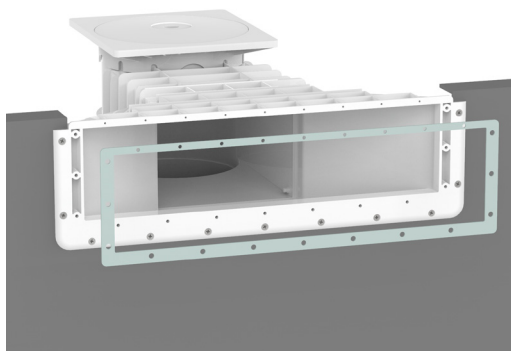
4

Posizionare l'armatura attorno allo skimmer (da notare che il reticolato superiore della bocchetta A500 è in grado di ospitare tondini per il cemento da  $\varnothing 12$  mm max.).



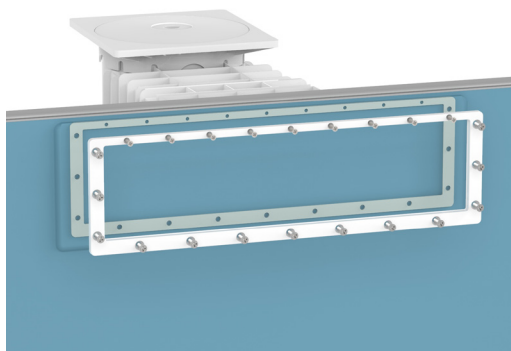
5

Posizionare la prima guarnizione piatta adesiva sul perimetro della bocchetta.



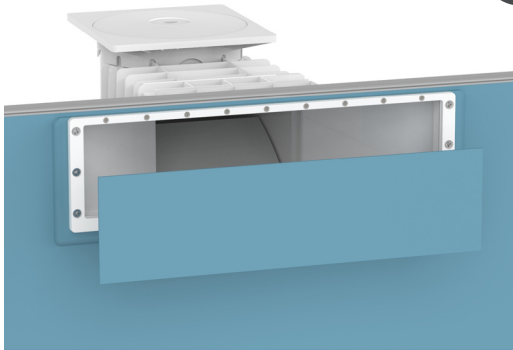
6

Procedere al posizionamento del rivestimento. Posizionare la seconda guarnizione piatta adesiva sulla flangia. Posizionare quindi la flangia sul rivestimento allineando gli assi dei fori con la bocchetta, quindi avvitare tutte le viti.



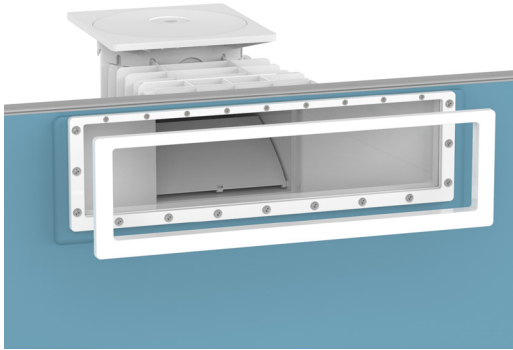
7

Aiutandosi con un taglierino, ritagliare il rivestimento, in modo da scoprire l'apertura dello skimmer. Rimuovere la parte di rivestimento ritagliato.



8

Fissare il nascondi vite sulla flangia.



# 1. KENMERKEN

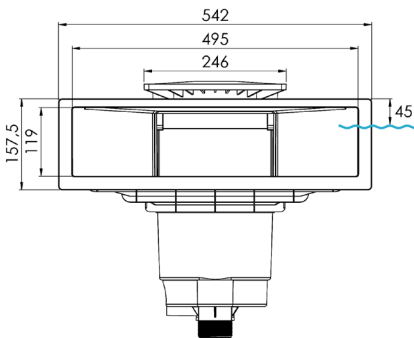
- Uitvoering in ABS
- Behandeld tegen UV-straling
- Regelafsluiter
- Geruisloos vlottend luik
- Overloop buiten Ø50mm
- Uitgangen: - Binnen Ø50mm (x2)  
- 1"1/2 binnen of 2" buiten

## ONTVANGST VAN HET MATERIAAL

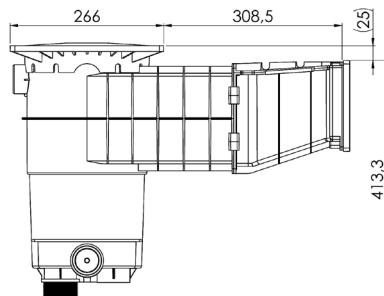
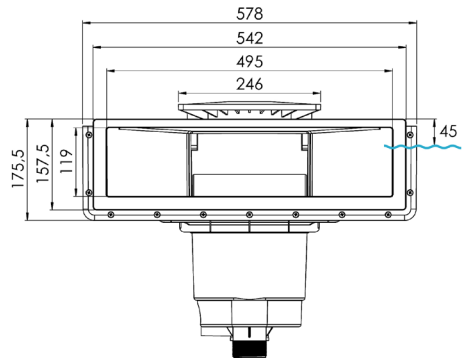
- 1 collo met de volledige meurtrière + toebehoren
- 1 collo met het volledige kastje + toebehoren

## WATERLIJN

- betonnen



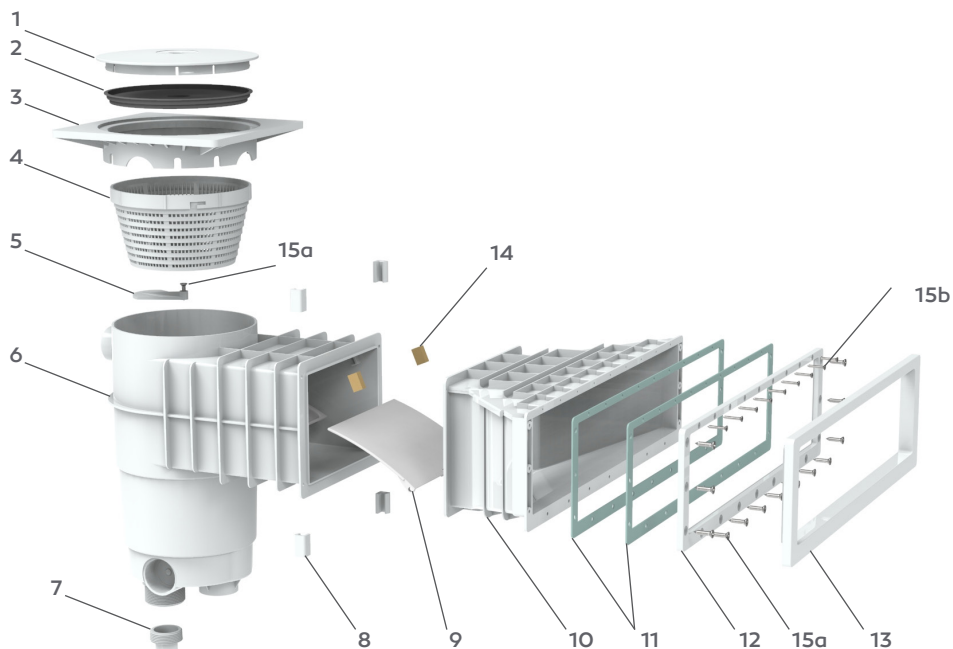
- paneel-voering



## 2. SAMENSTELLING VAN DE SETS

NL

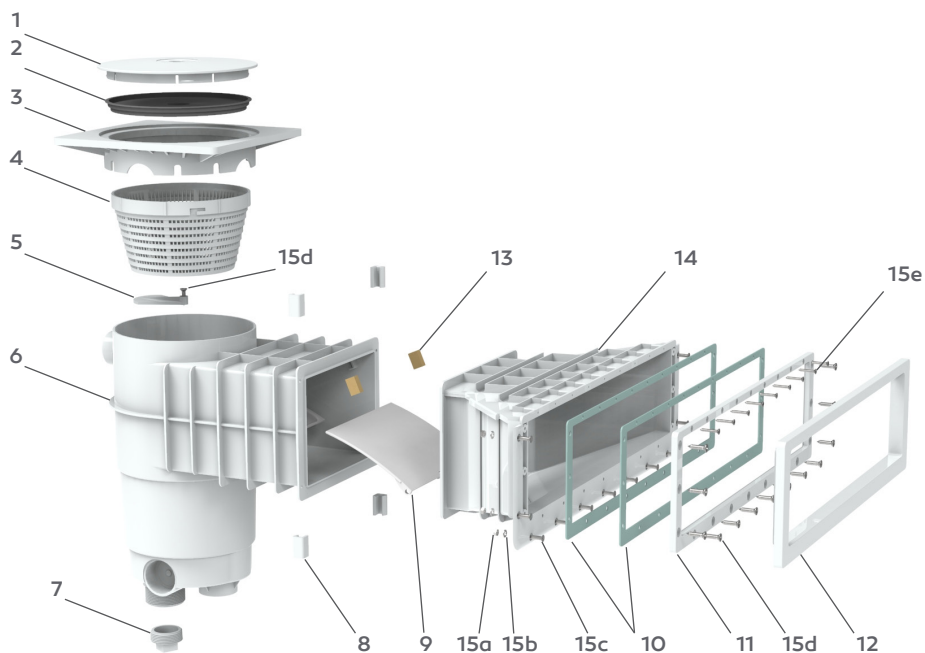
### BETONNEN VERSIE



| NR. | REF.  | BENAMING                         | AANTAL |
|-----|-------|----------------------------------|--------|
| 1   | 80176 | NEUTRAAL DEKSEL                  | 1      |
| 2   | 60360 | DEKSEL VERZINKPUT                | 1      |
| 4   | 62513 | TELESCOPISCHE SKIMMER/SKIMFILTER | 1      |
| 5   | 60284 | BODEMAFLUITER SKIMMER            | 1      |
| 6   | 60392 | MONOBLOC KASTJE                  | 1      |
| 7   | 64130 | MEURTRIÈRE KLEMMEN               | 4      |
| 9   | 62341 | HEK VOOR SKIMMER                 | 1      |
| 10  | 80470 | MEURTRIÈRE A500 DESIGN - BETON   | 1      |
| 11  | 80493 | DICHTING A500                    | 2      |
| 12  | 80491 | CONTRAFLENSA500                  | 1      |
| 13  | 80492 | SCHROEFADFDEKKING A500           | 1      |
| 14  | 62461 | STOP HEK                         | 2      |
| 15a | 60469 | SCHROEVEN TF 5.5X25              | 13     |
| 15b | 62423 | SCHROEVEN TF 3.9X25              | 9      |

## 2. SAMENSTELLING VAN DE SETS

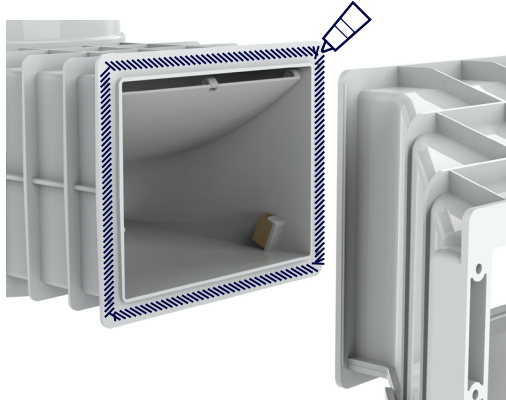
### VERSIE PANEEL-VOERING



| NR. | REF.  | BENAMING                         | AANTAL |
|-----|-------|----------------------------------|--------|
| 1   | 80176 | NEUTRAAL DEKSEL                  | 1      |
| 2   | 60360 | DEKSEL VERZINKPUT                | 1      |
| 4   | 62513 | TELESCOPISCHE SKIMMER/SKIMFILTER | 1      |
| 5   | 60284 | BODEMAFSLUITER SKIMMER           | 1      |
| 7   | 60392 | MONOBLOC KASTJE                  | 1      |
| 8   | 64130 | MEURTRIÈRE KLEMMEN               | 4      |
| 9   | 62341 | HEK VOOR SKIMMER                 | 1      |
| 10  | 80493 | DICHTING A500                    | 2      |
| 11  | 80491 | CONTRAFLENS A500                 | 1      |
| 12  | 80492 | SCHROEFAFDEKKING A500            | 1      |
| 13  | 62461 | STOP HEK                         | 2      |
| 14  | 80490 | MEURTRIÈRE A500 DESIGN - PANEEL  | 1      |
| 15a | 62419 | RVS ONDERLEGRING M5              | 11     |
| 15b | 62420 | RVS MOER M5                      | 11     |
| 15c | 62418 | SCHROEF TF M5X20                 | 11     |
| 15d | 60469 | SCHROEVEN TF 5.5X25              | 13     |
| 15e | 62423 | SCHROEVEN TF 3.9X25              | 9      |

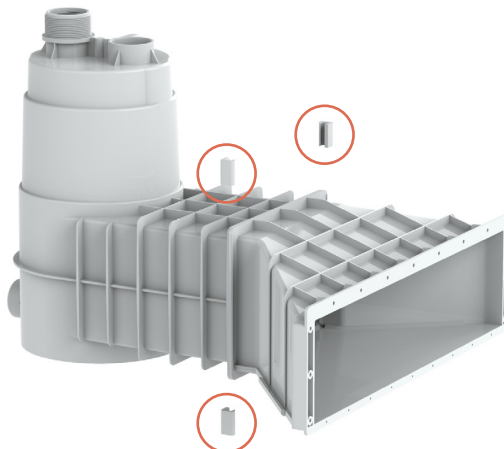
*De twee delen van de Skimmer kunnen zowel voor als na de plaatsing op de wand worden geassembleerd.*

Breng met de meegeleverde tube lijm een ononderbroken rups lijm aan op het aangegeven oppervlak (op de twee delen van de Skimmer).



**OPGELET:** Wanneer de twee delen aan elkaar gelijmd zijn, kunt u die na ongeveer een half uur nagenoeg niet meer van elkaar scheiden.

Om de onderdelen van de Skimmer stevig bij elkaar te houden dienen de vier klemmen aan de aaneenzetting van de Skimmer te worden aangebracht. Ga na of de beide delen over de volledige omtrek van de aaneenzetting contact maken.

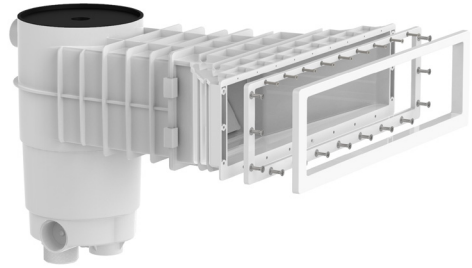


## 4. PLAATSING

### BETONNEN VERSIE

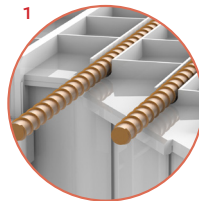
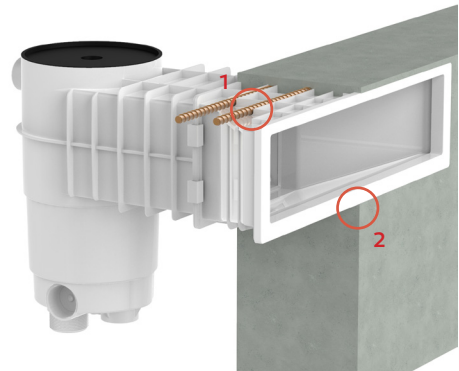
1

Assembleer de beugel en de schroefafdekking op de meurtrière van de Skimmer.



2

- Plaats en steun vervolgens de onderzijde van het kastje om de Skimmer horizontaal te stabiliseren.
- Breng de wapening aan rond de Skimmer (denk eraan dat in de bovenste ribben van de meurtrière A500 betonijzers van maximaal Ø12mm kunnen worden aangebracht<sup>1</sup>).
- Controleer nogmaals of het kastje horizontaal is geplaatst, giet het beton tot tegen de schroefafdekking<sup>2</sup> (wij raden minimaal 30 mm beton boven het kastje aan).

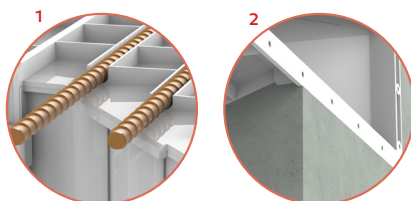
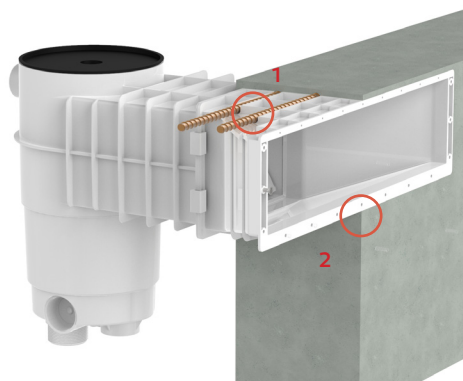




## BETONNEN-VOERING VERSIE

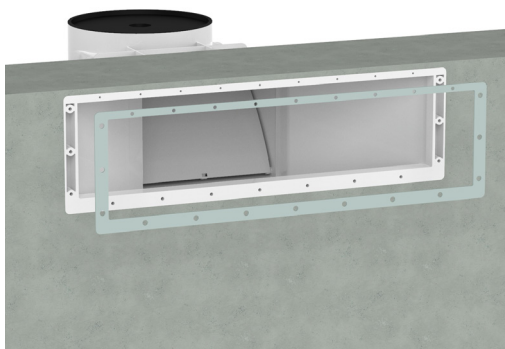
1

- Plaats en steun vervolgens de onderzijde van het kastje om de Skimmer horizontaal te stabiliseren.
- Breng de wapening aan rond de Skimmer (denk eraan dat in de bovenste ribben van de meurtrière A500 betonijzers van maximaal Ø12mm kunnen worden aangebracht<sup>1</sup>).
- Controleer nogmaals of het kastje horizontaal is geplaatst, giet het beton tot tegen de meurtrière<sup>2</sup> (wij raden minimaal 30 mm beton boven het kastje aan).



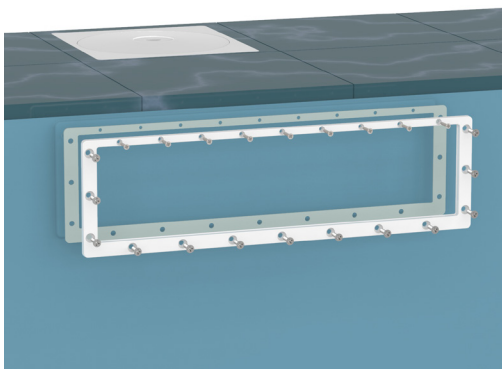
2

Plaats de eerste vlakke dichting met de kleefzijde op het oppervlak van de meurtrière. Breng vervolgens de voering aan (indien die er is).



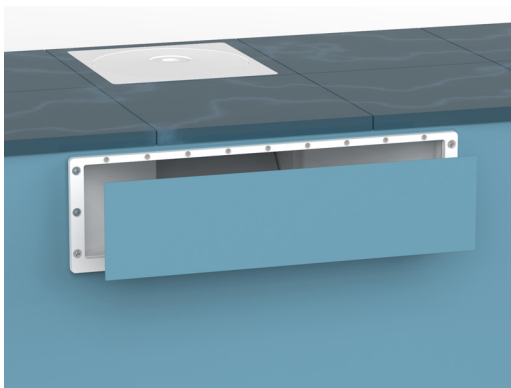
3

Plaats de tweede vlakke dichting op de beugel. Positioneer vervolgens de beugel op de voering en lijn daarbij de as van de gaten uit met de meurtrière en draai vervolgens alle schroeven aan. Het is beter om deze af te sluiten met een schroevendraaier in plaats van een schroevendraaier om schade aan het onderdeel te voorkomen.



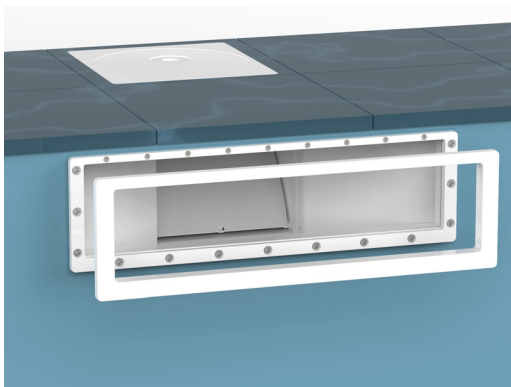
4

Snijd met een cutter de voering uit zodanig dat de opening van de Skimmer vrij komt. Verwijder de restanten van de voering.



5

Breng de schroefafdekking aan op de flens.

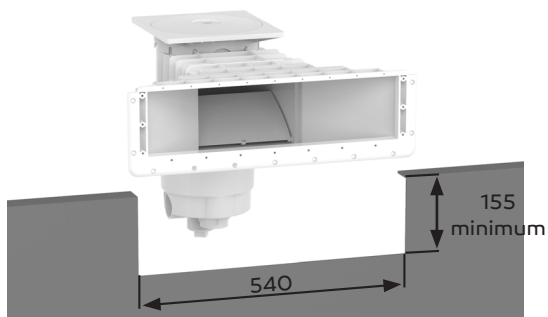


## VERSIE PANEEL-VOERING

1

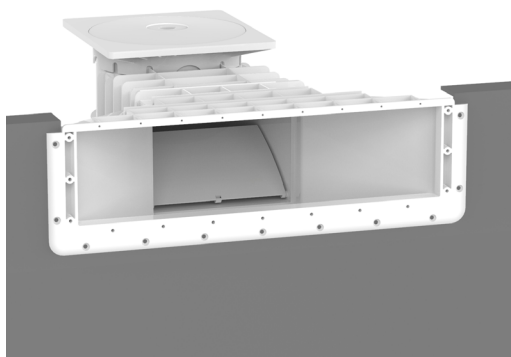
Snijd in de paneelstructuur een opening uit voor de Skimmer.

155 mm (minimum) x 540 mm



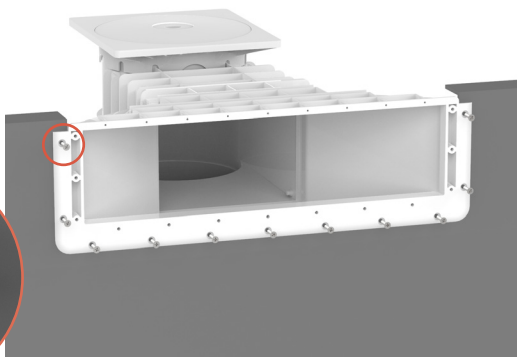
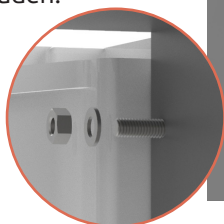
2

Plaats de Skimmer in de opening en boor vervolgens (Ø5.5mm) alle gaten voor de bouten. Vergeet niet de waterpas van het kastje te controleren.



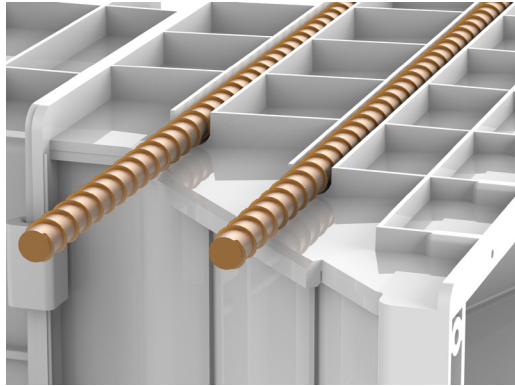
3

Schroef de bouten vast om de positie van de Skimmer op de structuur te behouden.



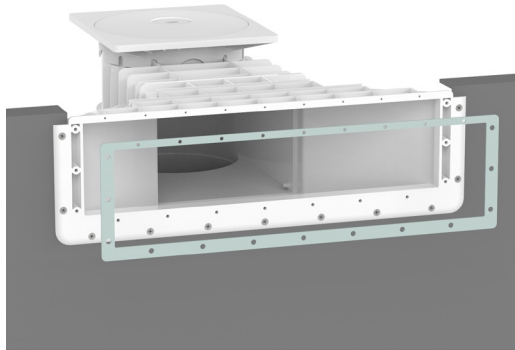
4

Breng de wapening aan rond de Skimmer (denk eraan dat in de bovenste ribben van de meurtrière A500 betonijzers van maximaal Ø12mm kunnen worden aangebracht).



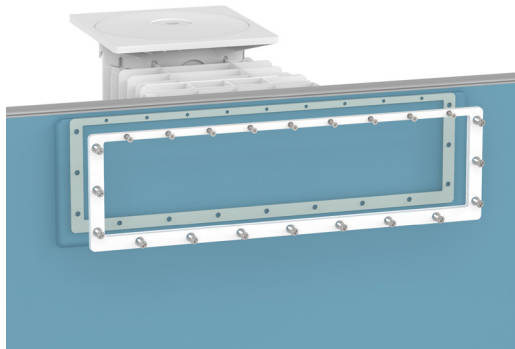
5

Plaats de eerste vlakke dichting met de kleefzijde op het oppervlak van de meurtrière.



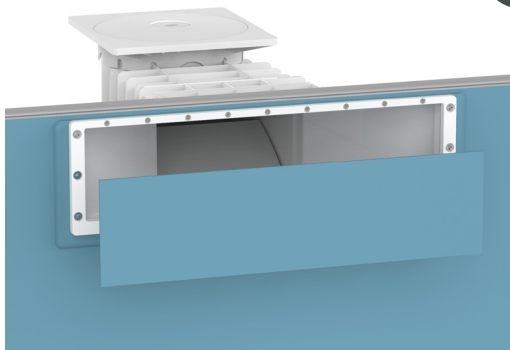
6

Breng de voering aan. Plaats de tweede vlakke dichting op de beugel. Positioneer vervolgens de beugel op de voering en lijn daarbij de as van de gaten uit met de meurtrière en draai vervolgens alle schroeven aan.



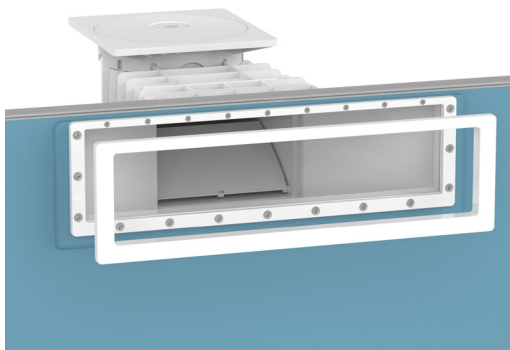
7

Snijd met een cutter de voering uit zodanig dat de opening van de Skimmer vrij komt. Verwijder de restanten van de voering.



8

Breng de schroefafdekking aan op de flens.



# 1. CARATERÍSTICAS

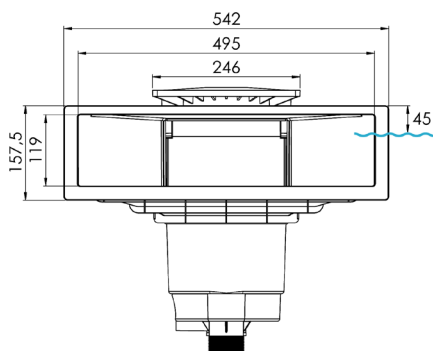
- Fabricada em ABS
- Tratamento anti-UV
- Obturador de afinação
- Persiana flutuante silenciosa
- Descarga de transbordamento Ø50mm exterior
- Saídas: - Ø50mm interior (x2)  
- 1"1/2 interior ou 2" exterior

## RECEÇÃO DO MATERIAL

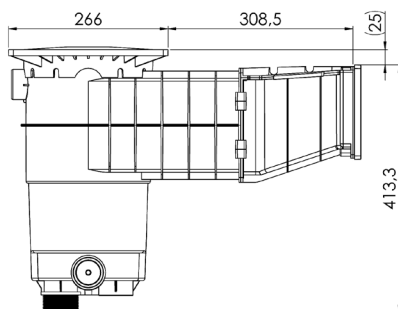
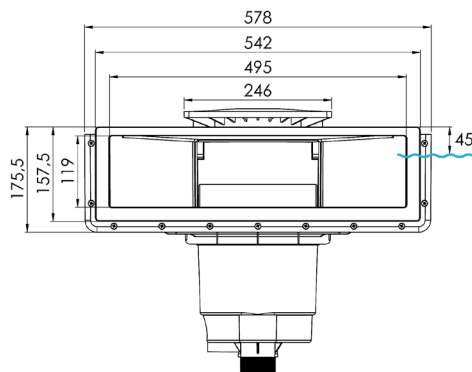
- 1 embalagem contendo a boca de aspiração + acessórios
- 1 embalagem contendo a caixa completa + acessórios

## LINHA DE ÁGUA

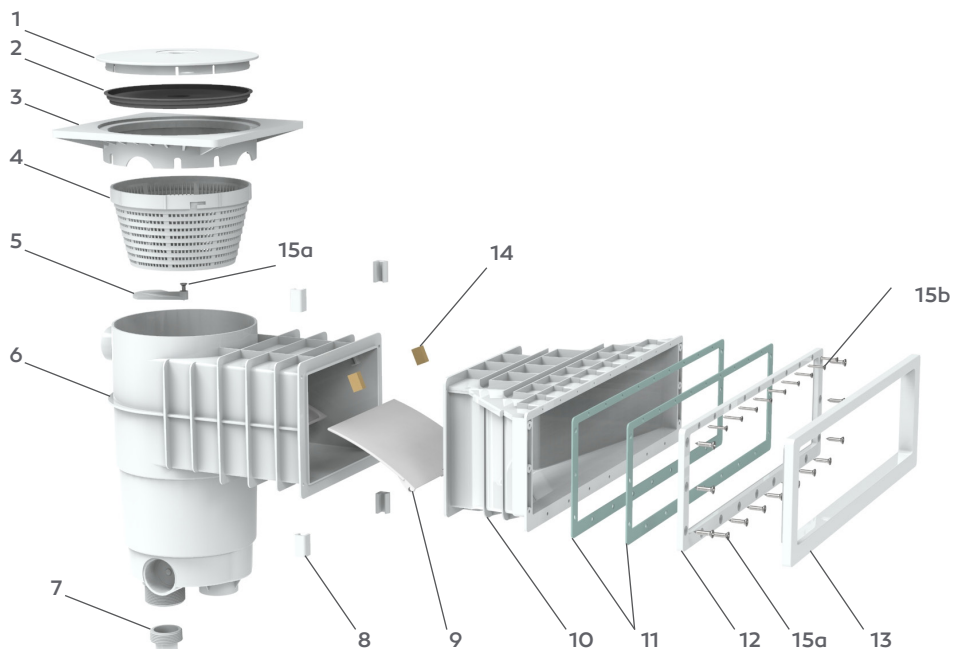
### - betão



### - painéis-revestimento



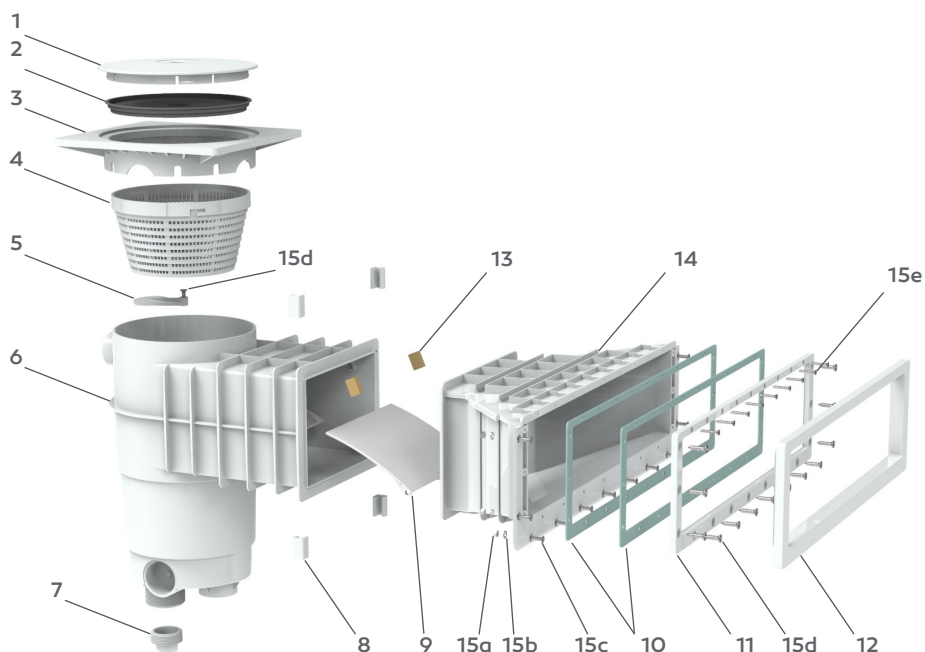
### VERSÃO PARA BETÃO



| Nº  | REF   | DESIGNAÇÃO                             | QUANTIDADE |
|-----|-------|--|------------|
| 1   | 80176 | TAMPA NEUTRA                           | 1          |
| 2   | 60360 | TAMPA PERDIDA (APENAS PARA INSTALAÇÃO) | 1          |
| 4   | 62513 | SKIMMER TELESCÓPICO/FILTRO             | 1          |
| 5   | 60284 | OBTURADOR DE FUNDO DO SKIMMER          | 1          |
| 7   | 60392 | CAIXA MONOBLOCO                        | 1          |
| 8   | 64130 | GRAMPOS DA BOCA DE ASPIRAÇÃO           | 4          |
| 9   | 62341 | BARREIRA PARA SKIMMER                  | 1          |
| 10  | 80470 | BOCA DE ASPIRAÇÃO A500 DESIGN – BETÃO  | 1          |
| 11  | 80493 | JUNTA A500                             | 2          |
| 12  | 80491 | CONTRA FLANGE A500                     | 1          |
| 13  | 80492 | PROTECTOR DE PARAFUSOS A500            | 1          |
| 14  | 62461 | BATENTE DA BARREIRA                    | 2          |
| 15a | 60469 | PARAFUSO TF 5,5X25                     | 13         |
| 15b | 62423 | PARAFUSO TF 3,9X25                     | 9          |

## 2. COMPOSIÇÃO DOS KITS

### VERSÃO PARA PAINÉIS-REVESTIMENTO

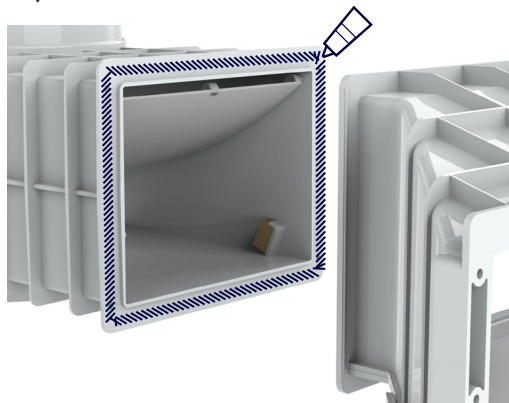


| Nº  | REF   | DESIGNAÇÃO                              | QUANTIDADE |
|-----|-------|---|------------|
| 1   | 80176 | TAMPA NEUTRA                            | 1          |
| 2   | 60360 | TAMPA PERDIDA (APENAS PARA INSTALAÇÃO)  | 1          |
| 4   | 62513 | SKIMMER TELESCÓPICO/FILTRO              | 1          |
| 5   | 60284 | OBTURADOR DE FUNDO DO SKIMMER           | 1          |
| 7   | 60392 | CAIXA MONOBLOCO                         | 1          |
| 8   | 64130 | GRAMPOS DA BOCA DE ASPIRAÇÃO            | 4          |
| 9   | 62341 | BARREIRA PARA SKIMMER                   | 1          |
| 10  | 80493 | JUNTA A500                              | 2          |
| 11  | 80491 | CONTRA FLANGE A500                      | 1          |
| 12  | 80492 | PROTETOR DE PARAFUSOS A500              | 1          |
| 13  | 62461 | BATENTE DA BARREIRA                     | 2          |
| 14  | 80490 | BOCA DE ASPIRAÇÃO A500 DESIGN - PAINÉIS | 1          |
| 15a | 62419 | ANILHA EM AÇO INOXIDÁVEL M5             | 11         |
| 15b | 62420 | PORCA EM AÇO INOXIDÁVEL M5              | 11         |
| 15c | 62418 | PARAFUSO TF M5X20                       | 11         |
| 15d | 60469 | PARAFUSO TF 5,5X25                      | 13         |
| 15e | 62423 | VIS TF 3.9X25                           | 9          |



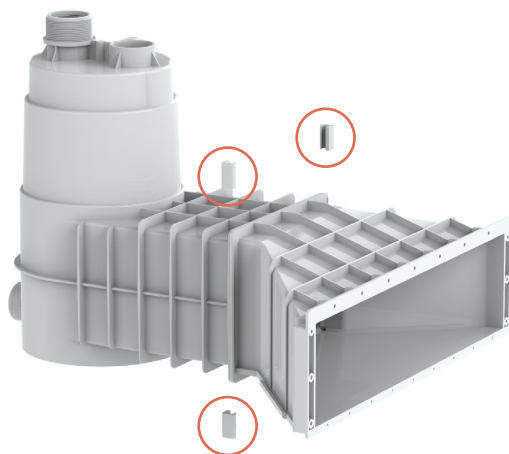
*As duas partes do skimmer podem ser montadas antes ou depois da instalação na parede.*

Aplique um cordão contínuo de cola na área indicada (em ambas as partes do skimmer) utilizando o tubo de cola fornecido.



**ATENÇÃO:** Uma vez coladas as duas partes, é praticamente impossível separá-las 1/2 hora.

Para facilitar a fixação das peças do skimmer, deslize os quatro grampos para apertar a junta do skimmer. Certifique-se de que o contacto é feito ao longo de todo o contorno da junta.

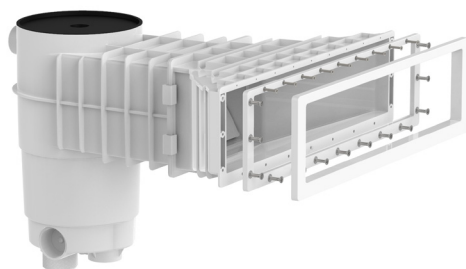


## 4. COLOCAÇÃO

### VERSÃO PARA BETÃO

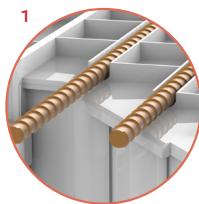
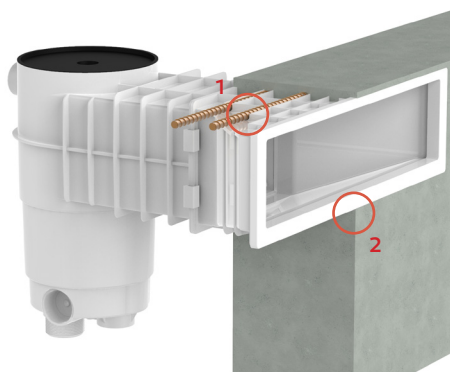
1

Monte a flange e a proteção dos parafusos na boca de aspiração do skimmer.



2

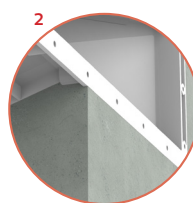
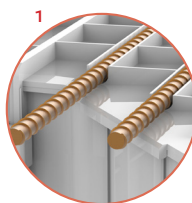
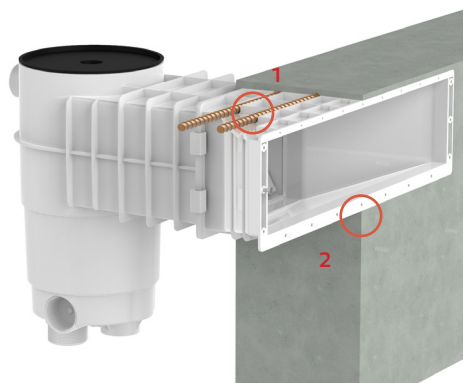
- Coloque e depois calce a parte de baixo da caixa para nivelar o skimmer na posição horizontal;
- Coloque a armadura à volta do skimmer (note que as nervuras superiores da boca de aspiração A500 podem aceitar os ferros de reforço do betão de Ø12mm no máximo.<sup>1)</sup>).
- Verifique novamente o nível da caixa e depois despeje o betão até ao nível da proteção dos parafusos<sup>2</sup> (recomendamos 30mm de betão no mínimo acima da caixa).



## VERSÃO PARA BETÃO-REVESTIMENTO

1

- Instale e coloque calços na parte inferior da caixa para nivelar o skimmer horizontalmente.
- Coloque a armadura à volta do skimmer (note que as nervuras superiores da boca de aspiração A500 podem aceitar os ferros de reforço do betão de Ø12mm no máximo.<sup>1)</sup>).
- Verifique novamente o nível da caixa e depois despeje o betão até ao nível da boca de aspiração<sup>2</sup> (recomendamos 30mm de betão no mínimo acima da caixa).



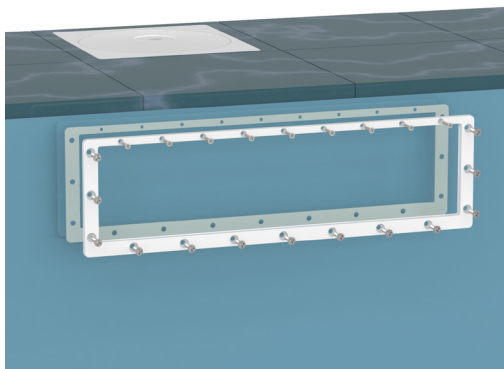
2

Instale a primeira junta plana com o lado adesivo contra a superfície da boca de aspiração. Em seguida, prosseguir com a instalação do revestimento (se for o caso).



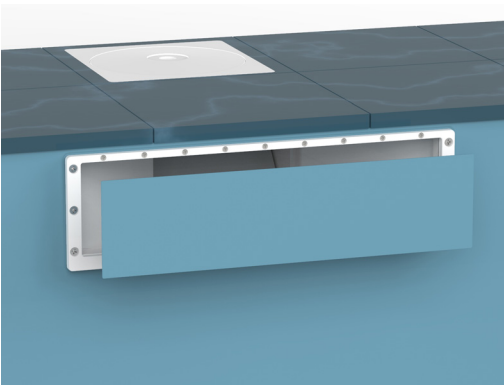
**3**

Colocar a segunda junta com o lado adesivo contra a flange. Em seguida, posicione o flange no revestimento alinhando os eixos dos furos com a boca de aspiração e em seguida, aperte todos os parafusos. É melhor terminar de apertar com uma chave de fenda em vez de uma chave de fenda para evitar danificar a peça.



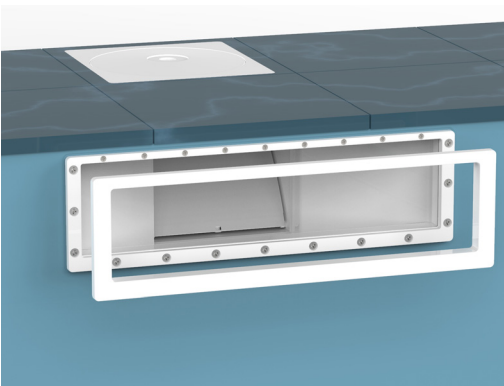
**4**

Usando um X-Acto/faca, corte o revestimento para revelar a abertura do skimmer. Remover a parte cortada do revestimento.



**5**

Encaixe a proteção dos parafusos na flange.

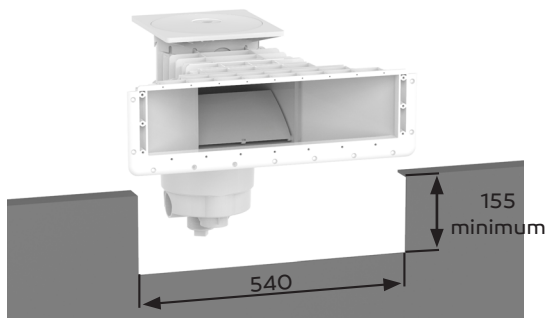


## VERSÃO PARA PAINÉIS-REVESTIMENTO

1

Faça um recorte na estrutura do painel que irá alojar o skimmer.

155mm (mínimo) x 540mm



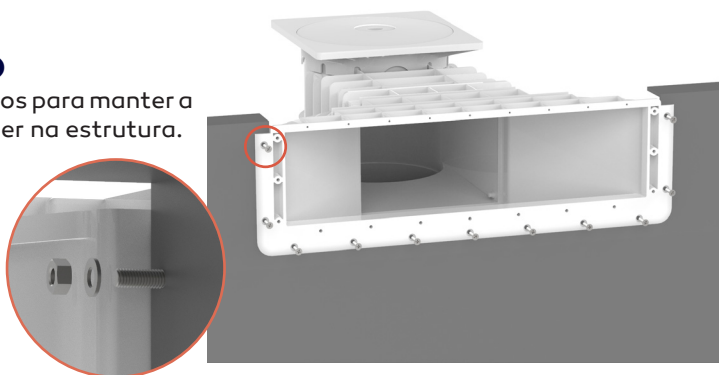
2

Posicione o skimmer na abertura e faça furos ( $\varnothing 5,5\text{mm}$ ) para os parafusos. Tenha atenção para verificar o nível da caixa.



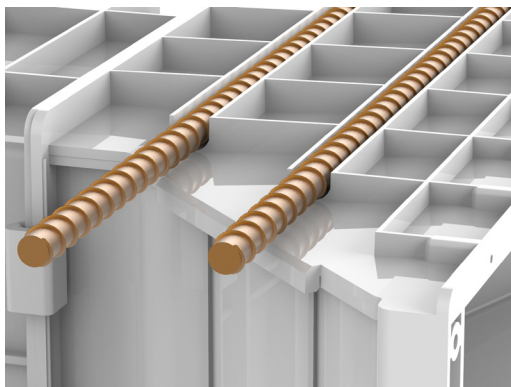
3

Aparte os parafusos para manter a posição do skimmer na estrutura.



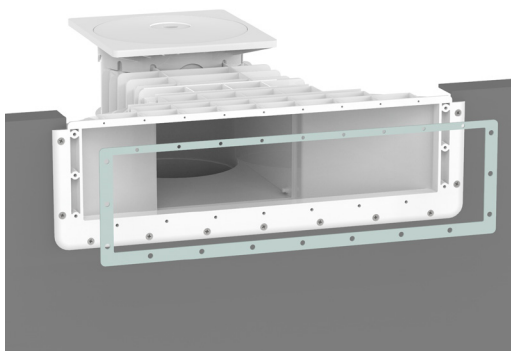
4

Coloque a armadura à volta do skimmer (note que as nervuras superiores da boca de aspiração A500 podem aceitar os ferros de reforço do betão de Ø12mm máximo.).



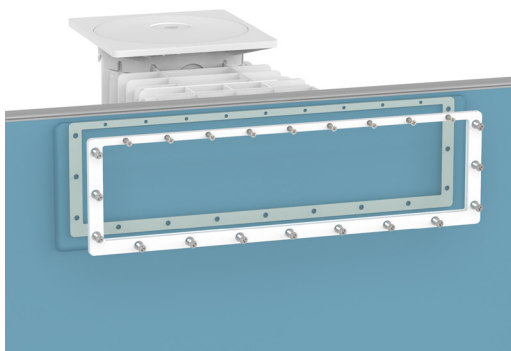
5

Instale a primeira junta plana com o lado adesivo contra a superfície da boca de aspiração.



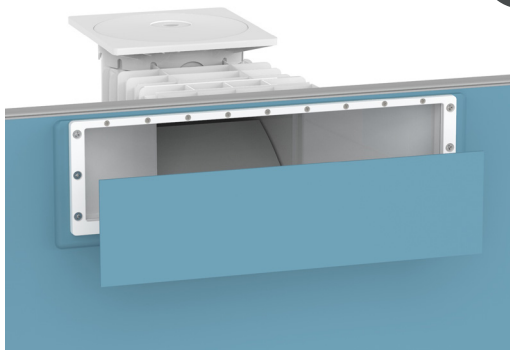
6

Faça a instalação do revestimento. Colocar a segunda junta com o lado adesivo contra a flange. Em seguida, posicione o flange no revestimento alinhando os eixos dos furos com a boca de aspiração e em seguida, aperte todos os parafusos.



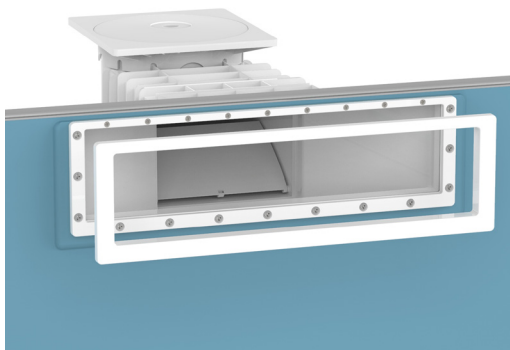
7

Usando um X-Acto/faca, corte o revestimento para revelar a abertura do skimmer. Remover a parte cortada do revestimento.



8

Encaixe a proteção dos parafusos na flange.





SOCIÉTÉ ACIS  
15, rue des Marais BP 3  
44310 ST PHILBERT DE GRAND LIEU - FRANCE  
[www.acis-france.com](http://www.acis-france.com)  
[client.acis@acis-france.com](mailto:client.acis@acis-france.com)